

At this time the Courthouse is open to the public. Anyone wishing to attend will need to call ahead at 913-684-0417 to reserve a seat as the meeting room has limited capacity. We are encouraging everyone to continue to view the meeting live via YouTube.

*Leavenworth County*  
*Board of County Commissioners*

*Regular Meeting Agenda*  
300 Walnut Street, Suite 225  
Leavenworth, KS 66048  
May 5, 2021  
9:00 a.m.

- I. CALL TO ORDER
- II. PLEDGE OF ALLEGIANCE/MOMENT OF SILENCE
- III. ROLL CALL
- IV. PUBLIC COMMENT: Public Comment shall be limited to 15 minutes at the beginning of each meeting for agenda items **only** and limited to three minutes per person. Comments at the end of the meeting shall be open to any topic of general interest to the Board of County Commissioners and limited to five minutes per person. There should be no expectation of interaction by the Commission during this time.  
  
Anyone wishing to make comments either on items on the agenda or not are encouraged to provide their comments in writing no later than 8:00 AM the Monday immediately preceding the meeting. These comments will be included in the agenda packet for everyone to access and review. This allows the Commission to have time to fully consider input and request follow up if needed prior to the meeting.
- V. ADMINISTRATIVE BUSINESS:
  - a) Update from the Public Health Officer
- VI. CONSENT AGENDA: The items on the Consent Agenda are considered by staff to be routine business items. Approval of the items may be made by a single motion, seconded, and a majority vote with no separate discussion of any item listed. Should a member of the Governing Body desire to discuss any item, it will be removed from the Consent Agenda and considered separately.

- a) Approval of the minutes of April 28, 2021
- b) Approval of the minutes of the work session of April 28, 2021
- c) Approval of the minutes of the work session of April 29, 2021
- d) Approval of the schedule for the week May 10, 2021
- e) Approval of the check register
- f) Approve and sign the OCB's

VII. FORMAL BOARD ACTION:

- a) Consider a motion to approve Resolution 2021-12, a special use permit for Polhemus Mechanic.
- b) Consider a motion to approve Resolution 2021-13, a special use permit for Mortsolf Laydown yard and repair service.

VIII. PRESENTATIONS AND DISCUSSION ITEMS: presentations are materials of general concern where no action or vote is requested or anticipated.

- a) City of Lansing economic development discussion

IX. ADDITIONAL PUBLIC COMMENT IF NEEDED

X. ADJOURNMENT

# LEAVENWORTH COUNTY COMMISSIONERS MEETING SCHEDULE

## Monday, May 3, 2021

## Tuesday, May 4, 2021

12:00 p.m. Mental Health Task Force meeting via Zoom

## Wednesday, May 5, 2021

9:00 a.m. Leavenworth County Commission meeting  
• Commission Meeting Room, 300 Walnut, Leavenworth KS

## Thursday, May 6, 2021

## Friday, May 7, 2021

ALL SUCH OTHER BUSINESS THAT MAY COME BEFORE THE COMMISSION

ALL MEETINGS ARE OPEN TO THE PUBLIC

COMMENTS SHOULD BE OF GENERAL INTEREST OF THE PUBLIC AND SUBJECT TO THE RULES OF DECORUM

\*\*\*\*\*April 28, 2021\*\*\*\*\*

The Board of County Commissioners met in a regular session on Wednesday, April 28, 2021. Commissioner Mike Smith, Commissioner Doug Smith, Commissioner Stieben, Commissioner Kaaz and Commissioner Culbertson are present; Also present: Mark Loughry, County Administrator; David Van Parys, Senior County Counselor; Krystal Voth, Planning and Zoning Director; Connie Harmon, Council on Aging Director; Jamie VanHouten, Community Corrections Director; TerriLois Mashburn, Register of Deeds; Janet Klasinski, County Clerk; Chuck Magaha, Emergency Management Director; Bill Noll, Infrastructure and Construction Services; April Swartz, Varney and Associates; John Richmeier, Leavenworth Times

Residents: Gary Smith, Julie Jacobs, Margaret Smith, Rex Wallis, Dennis Taylor, John Matthews, Kirk Pederson

**PUBLIC COMMENT:**

Gary Smith, Julie Jacobs, Margaret Smith, Rex Wallis and Kirk Pederson commented on agenda items.

**ADMINISTRATIVE BUSINESS:**

Bill Noll requested approval of a cost share with Atchison County on a bridge reconstruction located on the county line.

***A motion was made by Commissioner Culbertson and seconded by Commissioner Kaaz to approve the expenditure not to exceed \$17,000 for the completed bridge project.***

***Motion passed, 5-0.***

Commissioner Stieben inquired about the dust control program and how to apply for it.

Mark Loughry indicated property owners that live on gravel roads can apply to the County to have an application of chip seal or whatever application the County is using at the time to their road at approximately \$19.00 per linear foot.

April Swartz with Varney and Associates presented a review of the annual audit for Leavenworth County.

Commissioner Stieben requested the Paradise Park issue be placed on the agenda next week.

A brief discussion took place regarding Paradise Park resulting that the issue be brought back in 30 days.

Commissioner Doug Smith requested the Board to sign a birthday card for Anna Mary Landauer for her 103<sup>rd</sup> birthday.

***A motion was made by Commissioner Culbertson and seconded by Commissioner Mike Smith to accept the consent agenda for Wednesday, April 28, 2021 as presented minus the Ackerland Hill plat.***

Commissioner Doug Smith inquired if Mitchell Road qualified for a traffic study.

Mr. Loughry stated the traffic count nor the number of parcels qualify for a traffic study.

***Motion passed, 5-0.***

***A motion was made by Commissioner Culbertson and seconded by Commissioner Kaaz to table Ackerland Hill for two weeks.***

***Motion passed, 4-0, Commissioner Doug Smith abstained.***

Jamie VanHouten requested approval of a line item adjustment to the Community Corrections budget and the two Comprehensive Grants for FY 2022.

***A motion was made by Commissioner Doug Smith and seconded by Commissioner Culbertson to approve the FY 2022 Comprehensive Plan for Community Corrections.***

***Motion passed, 5-0.***

***A motion was made by Commissioner Kaaz and seconded by Commissioner Culbertson to approve the line item adjustment for the current budget for Community Corrections.***

***Motion passed, 5-0.***

Connie Harmon requested approval to enter a memorandum of understanding with Jeremy Greenamyre for his proposal and application for the Kansas Housing Resource Corporation for plans to build 2<sup>nd</sup> Avenue Estates.

***A motion was made by Commissioner Kaaz and seconded by Commissioner Culbertson to approve the Council on Aging to enter a memorandum of understanding with Jeremy Greenamyre of Greenamyre Rentals.***

***Motion passed, 5-0.***

TerriLois Mashburn requested funding from the American Rescue Plan Act 2021 in the amount of \$740,443.00.

***A motion was made by Commissioner Culbertson and seconded by Commissioner Mike Smith to table until more information is received.***

***Motion passed, 5-0.***

Chuck Magaha updated the Board on severe weather, FEMA funding and functions of his department.

Stacy Driscoll commented.

Commissioner Doug Smith attended the Fairmount Township meeting last week, a MARC meeting and a ribbon cutting ceremony for Basehor Farmer and Craft Market.

Commissioner Stieben toured the city of Basehor with the mayor and attended the Republican State Convention.

Commissioner Culbertson attended the Port Authority meeting and met with Kickapoo and Easton Township Boards to discuss the American Rescue Plan monies.

Commissioner Kaaz attended the Port Authority meeting and met with the newest regional representative with KDOT. She also met Todd Thompson about the County Attorney's volunteer program.

***A motion was made by Commissioner Doug Smith and seconded by Commissioner Mike Smith to adjourn.***

***Motion passed, 5-0.***

The Board adjourned at 11:00 a.m.

Draft

\*\*\*\*\*April 28, 2021 \*\*\*\*\*

The Board of County Commissioners met in a work session on Wednesday, April 28, 2021. Commissioner Mike Smith, Commissioner Stieben, Commissioner Doug Smith; Commissioner Kaaz and Commissioner Culbertson are present; Mark Loughry, County Administrator is present; Also present: Senior County Counselor, David Van Parys; Krystal Voth, Planning and Zoning Director; Bill Noll, Infrastructure and Construction Services Director; John Richmeier, Leavenworth Times

Residents: Joe Herring

The Board met in a work session to discuss the Public Works capital improvement plan and cross access easements.

The Board ended the work session at 12:15 p.m.

\*\*\*\*\*April 29, 2021 \*\*\*\*\*

The Board of County Commissioners met in a work session on Thursday, April 29, 2021. Commissioner Mike Smith, Commissioner Stieben, Commissioner Doug Smith; Commissioner Kaaz and Commissioner Culbertson are present; Mark Loughry, County Administrator is present; Also present: Senior County Counselor, David Van Parys; Andy Dedeke, Leavenworth County Sheriff; Mollie Hill, Attorney for the Leavenworth County Sheriff; Jason Osterhaus with Senator Jerry Moran's Office; John Richmeier, Leavenworth Times

The Board met in a work session to discuss the pros vs. cons in entering an agreement with CoreCivic.

The Board ended the work session at 9:58 a.m.

Draft



# LEAVENWORTH COUNTY COMMISSIONERS MEETING SCHEDULE

**Monday, May 10, 2021**

**Tuesday, May 11, 2021**

**Wednesday, May 12, 2021**

9:00 a.m. Leavenworth County Commission meeting  
• Commission Meeting Room, 300 Walnut, Leavenworth KS

**Thursday, May 13, 2021**

12:00 p.m. LCDC meeting via Zoom

**Friday, May 14, 2021**

ALL SUCH OTHER BUSINESS THAT MAY COME BEFORE THE COMMISSION

ALL MEETINGS ARE OPEN TO THE PUBLIC

COMMENTS SHOULD BE OF GENERAL INTEREST OF THE PUBLIC AND SUBJECT TO THE RULES OF DECORUM

START DATE: 04/24/2021 END DATE: 04/28/2021

TYPES OF CHECKS SELECTED: \* ALL TYPES

			P.O.NUMBER	CHECK#					
395	AIS SPECIALTY	MOMAR INC	319346	91943 AP	04/27/2021	0-001-5-32-391	REPL AIS CHECK 90044 NEVER REC	695.09	
1537	AMERICAN RESPONSE VE	AMERICAN RESPONSE VEHICLE INC	319362	91946 AP	04/28/2021	1-001-5-05-306	EMS UNIT 9112 02 DUAL REGULATO	500.25	
2541	BEST PLUMBING SPECIA	BEST PLUMBING SPECIALTIES,INC	319365	91949 AP	04/28/2021	1-001-5-07-357	65483 JAIL PLUMBING SUPPLIES	1,526.37	
2541	BEST PLUMBING SPECIA	BEST PLUMBING SPECIALTIES,INC	319365	91949 AP	04/28/2021	1-001-5-07-357	65483 JAIL PLUMBING SUPPLIES	52.16	
							*** VENDOR		
							2541 TOTAL		1,578.53
283	BUSETTI ROBERT	ROBERT BUSETTI	319371	91955 AP	04/28/2021	1-001-5-07-219	APRIL DENTIST FOR INMATES	350.00	
1388	CASH-WA DISTRIBUTING	CASH-WA DISTRIBUTING	319372	91956 AP	04/28/2021	1-001-5-07-261	800782 HAIRNETS - JAIL KITCHEN	26.24	
648	COMMERCE BANK-COMMER	COMMERCE BANK-COMMERCIAL CARDS	319374	91963 AP	04/28/2021	1-001-5-02-203	KCCEOA CONF REGISTRATION X3	570.00	
648	COMMERCE BANK-COMMER	COMMERCE BANK-COMMERCIAL CARDS	319374	91963 AP	04/28/2021	1-001-5-02-301	CALCULATOR, ENVELOPES, STAX RE	28.99	
648	COMMERCE BANK-COMMER	COMMERCE BANK-COMMERCIAL CARDS	319374	91963 AP	04/28/2021	1-001-5-02-301	CALCULATOR, ENVELOPES, STAX RE	1.79	
648	COMMERCE BANK-COMMER	COMMERCE BANK-COMMERCIAL CARDS	319374	91963 AP	04/28/2021	1-001-5-04-301	WALMART - PRESENTATION SUPPLIE	7.97	
648	COMMERCE BANK-COMMER	COMMERCE BANK-COMMERCIAL CARDS	319374	91963 AP	04/28/2021	1-001-5-05-202	EMS:TNG, FIELD SUPPLY, RED WASTE	1,700.00	
648	COMMERCE BANK-COMMER	COMMERCE BANK-COMMERCIAL CARDS	319374	91963 AP	04/28/2021	1-001-5-05-203	EMS:LICENSE,FLD SUP,BLDG/VEH M	420.00	
648	COMMERCE BANK-COMMER	COMMERCE BANK-COMMERCIAL CARDS	319374	91963 AP	04/28/2021	1-001-5-05-215	TONGANOXIE WATER (EMS 9102)	70.29	
648	COMMERCE BANK-COMMER	COMMERCE BANK-COMMERCIAL CARDS	319374	91963 AP	04/28/2021	1-001-5-05-215	WASTE MGMT - SHF/EMS 9102	94.43	
648	COMMERCE BANK-COMMER	COMMERCE BANK-COMMERCIAL CARDS	319374	91963 AP	04/28/2021	1-001-5-05-216	EMS:TNG, FIELD SUPPLY, RED WASTE	760.21	
648	COMMERCE BANK-COMMER	COMMERCE BANK-COMMERCIAL CARDS	319374	91963 AP	04/28/2021	1-001-5-05-282	EMS:TNG, FIELD SUPPLY, RED WASTE	329.53	
648	COMMERCE BANK-COMMER	COMMERCE BANK-COMMERCIAL CARDS	319374	91963 AP	04/28/2021	1-001-5-05-301	EMS:LICENSE,FLD SUP,BLDG/VEH M	8.32	
648	COMMERCE BANK-COMMER	COMMERCE BANK-COMMERCIAL CARDS	319374	91963 AP	04/28/2021	1-001-5-05-301	EMS:LICENSE,FLD SUP,BLDG/VEH M	1.28	
648	COMMERCE BANK-COMMER	COMMERCE BANK-COMMERCIAL CARDS	319374	91963 AP	04/28/2021	1-001-5-05-301	EMS:LICENSE,FLD SUP,BLDG/VEH M	12.72	
648	COMMERCE BANK-COMMER	COMMERCE BANK-COMMERCIAL CARDS	319374	91963 AP	04/28/2021	1-001-5-05-301	EMS:TNG, FIELD SUPPLY, RED WASTE	60.59	
648	COMMERCE BANK-COMMER	COMMERCE BANK-COMMERCIAL CARDS	319374	91963 AP	04/28/2021	1-001-5-05-306	EMS:LICENSE,FLD SUP,BLDG/VEH M	488.44	
648	COMMERCE BANK-COMMER	COMMERCE BANK-COMMERCIAL CARDS	319374	91963 AP	04/28/2021	1-001-5-05-306	EMS:LICENSE,FLD SUP,BLDG/VEH M	15.99	
648	COMMERCE BANK-COMMER	COMMERCE BANK-COMMERCIAL CARDS	319374	91963 AP	04/28/2021	1-001-5-05-306	EMS:LICENSE,FLD SUP,BLDG/VEH M	87.92	
648	COMMERCE BANK-COMMER	COMMERCE BANK-COMMERCIAL CARDS	319374	91963 AP	04/28/2021	1-001-5-05-306	EMS:LICENSE,FLD SUP,BLDG/VEH M	15.52	
648	COMMERCE BANK-COMMER	COMMERCE BANK-COMMERCIAL CARDS	319374	91963 AP	04/28/2021	1-001-5-05-306	EMS:LICENSE,FLD SUP,BLDG/VEH M	21.26	
648	COMMERCE BANK-COMMER	COMMERCE BANK-COMMERCIAL CARDS	319374	91963 AP	04/28/2021	1-001-5-05-350	EMS:LICENSE,FLD SUP,BLDG/VEH M	101.40	
648	COMMERCE BANK-COMMER	COMMERCE BANK-COMMERCIAL CARDS	319374	91963 AP	04/28/2021	1-001-5-05-350	EMS:TNG, FIELD SUPPLY, RED WASTE	844.70	
648	COMMERCE BANK-COMMER	COMMERCE BANK-COMMERCIAL CARDS	319374	91963 AP	04/28/2021	1-001-5-05-381	EMS:LICENSE,FLD SUP,BLDG/VEH M	498.60	
648	COMMERCE BANK-COMMER	COMMERCE BANK-COMMERCIAL CARDS	319374	91963 AP	04/28/2021	1-001-5-05-381	EMS:LICENSE,FLD SUP,BLDG/VEH M	314.75	
648	COMMERCE BANK-COMMER	COMMERCE BANK-COMMERCIAL CARDS	319374	91963 AP	04/28/2021	1-001-5-05-381	EMS:LICENSE,FLD SUP,BLDG/VEH M	98.27	
648	COMMERCE BANK-COMMER	COMMERCE BANK-COMMERCIAL CARDS	319374	91963 AP	04/28/2021	1-001-5-05-381	EMS:LICENSE,FLD SUP,BLDG/VEH M	123.11	
648	COMMERCE BANK-COMMER	COMMERCE BANK-COMMERCIAL CARDS	319374	91963 AP	04/28/2021	1-001-5-05-381	EMS:TNG, FIELD SUPPLY, RED WASTE	11,456.11	
648	COMMERCE BANK-COMMER	COMMERCE BANK-COMMERCIAL CARDS	319374	91963 AP	04/28/2021	1-001-5-05-383	EMS:LICENSE,FLD SUP,BLDG/VEH M	45.47	
648	COMMERCE BANK-COMMER	COMMERCE BANK-COMMERCIAL CARDS	319374	91963 AP	04/28/2021	1-001-5-05-383	EMS:LICENSE,FLD SUP,BLDG/VEH M	65.25	
648	COMMERCE BANK-COMMER	COMMERCE BANK-COMMERCIAL CARDS	319374	91963 AP	04/28/2021	1-001-5-05-383	EMS:TNG, FIELD SUPPLY, RED WASTE	491.12	
648	COMMERCE BANK-COMMER	COMMERCE BANK-COMMERCIAL CARDS	319374	91963 AP	04/28/2021	1-001-5-06-301	PAPER, OFFICE SUPPLIES (PLANNI	60.98	
648	COMMERCE BANK-COMMER	COMMERCE BANK-COMMERCIAL CARDS	319374	91963 AP	04/28/2021	1-001-5-06-301	PAPER, OFFICE SUPPLIES (PLANNI	79.44	
648	COMMERCE BANK-COMMER	COMMERCE BANK-COMMERCIAL CARDS	319374	91963 AP	04/28/2021	1-001-5-07-202	SHF:TNG, INV, JAIL, UNIFORM, AMMO,	600.00	
648	COMMERCE BANK-COMMER	COMMERCE BANK-COMMERCIAL CARDS	319374	91963 AP	04/28/2021	1-001-5-07-202	SHF:TNG, INV, JAIL, UNIFORM, AMMO,	2,412.00	
648	COMMERCE BANK-COMMER	COMMERCE BANK-COMMERCIAL CARDS	319374	91963 AP	04/28/2021	1-001-5-07-208	FIRST ADVANTAGE BACKGROUND CHE	17.90	
648	COMMERCE BANK-COMMER	COMMERCE BANK-COMMERCIAL CARDS	319374	91963 AP	04/28/2021	1-001-5-07-208	WASTE MGMT - SHF/EMS 9102	411.73	
648	COMMERCE BANK-COMMER	COMMERCE BANK-COMMERCIAL CARDS	319374	91963 AP	04/28/2021	1-001-5-07-210	AT&T MONTHLY SVC SHF	46.23	
648	COMMERCE BANK-COMMER	COMMERCE BANK-COMMERCIAL CARDS	319374	91963 AP	04/28/2021	1-001-5-07-210	AT&T MONTHLY SVC	221.80	
648	COMMERCE BANK-COMMER	COMMERCE BANK-COMMERCIAL CARDS	319374	91963 AP	04/28/2021	1-001-5-07-211	SHF:TNG, INV, JAIL, UNIFORM, AMMO,	522.71	
648	COMMERCE BANK-COMMER	COMMERCE BANK-COMMERCIAL CARDS	319374	91963 AP	04/28/2021	1-001-5-07-211	SHF:TNG, INV, JAIL, UNIFORM, AMMO,	218.40	
648	COMMERCE BANK-COMMER	COMMERCE BANK-COMMERCIAL CARDS	319374	91963 AP	04/28/2021	1-001-5-07-213	SHF:TNG, INV, JAIL, UNIFORM, AMMO,	362.38	
648	COMMERCE BANK-COMMER	COMMERCE BANK-COMMERCIAL CARDS	319374	91963 AP	04/28/2021	1-001-5-07-219	SHF:TNG, INV, JAIL, UNIFORM, AMMO,	396.25	
648	COMMERCE BANK-COMMER	COMMERCE BANK-COMMERCIAL CARDS	319374	91963 AP	04/28/2021	1-001-5-07-251	SHF:TNG, INV, JAIL, UNIFORM, AMMO,	1,870.98	
648	COMMERCE BANK-COMMER	COMMERCE BANK-COMMERCIAL CARDS	319374	91963 AP	04/28/2021	1-001-5-07-251	SHF:OFC SUPP, UNIF, POLICE EQUIP	203.08	
648	COMMERCE BANK-COMMER	COMMERCE BANK-COMMERCIAL CARDS	319374	91963 AP	04/28/2021	1-001-5-07-301	SHF:TNG, INV, JAIL, UNIFORM, AMMO,	140.90	
648	COMMERCE BANK-COMMER	COMMERCE BANK-COMMERCIAL CARDS	319374	91963 AP	04/28/2021	1-001-5-07-301	SHF:TNG, INV, JAIL, UNIFORM, AMMO,	22.25	

TYPES OF CHECKS SELECTED: \* ALL TYPES

			P.O. NUMBER	CHECK#						
648	COMMERCE BANK-COMMER	COMMERCE BANK-COMMERCIAL CARDS	319374	91963 AP	04/28/2021	1-001-5-07-301	SHF:OFC SUPP,UNIF,POLICE EQUIP			454.27
648	COMMERCE BANK-COMMER	COMMERCE BANK-COMMERCIAL CARDS	319374	91963 AP	04/28/2021	1-001-5-07-305	SHF:TNG,INV,JAIL,UNIFORM,AMMO,			421.76
648	COMMERCE BANK-COMMER	COMMERCE BANK-COMMERCIAL CARDS	319374	91963 AP	04/28/2021	1-001-5-07-350	SHF:TNG,INV,JAIL,UNIFORM,AMMO,			459.88
648	COMMERCE BANK-COMMER	COMMERCE BANK-COMMERCIAL CARDS	319374	91963 AP	04/28/2021	1-001-5-07-350	SHF:TNG,INV,JAIL,UNIFORM,AMMO,			277.03
648	COMMERCE BANK-COMMER	COMMERCE BANK-COMMERCIAL CARDS	319374	91963 AP	04/28/2021	1-001-5-07-350	SHF:OFC SUPP,UNIF,POLICE EQUIP			95.89
648	COMMERCE BANK-COMMER	COMMERCE BANK-COMMERCIAL CARDS	319374	91963 AP	04/28/2021	1-001-5-07-353	SHF:TNG,INV,JAIL,UNIFORM,AMMO,			52.00
648	COMMERCE BANK-COMMER	COMMERCE BANK-COMMERCIAL CARDS	319374	91963 AP	04/28/2021	1-001-5-07-353	SHF:OFC SUPP,UNIF,POLICE EQUIP			373.66
648	COMMERCE BANK-COMMER	COMMERCE BANK-COMMERCIAL CARDS	319374	91963 AP	04/28/2021	1-001-5-07-355	SHF:OFC SUPP,UNIF,POLICE EQUIP			26.70
648	COMMERCE BANK-COMMER	COMMERCE BANK-COMMERCIAL CARDS	319374	91963 AP	04/28/2021	1-001-5-07-356	SHF:TNG,INV,JAIL,UNIFORM,AMMO,			7.86
648	COMMERCE BANK-COMMER	COMMERCE BANK-COMMERCIAL CARDS	319374	91963 AP	04/28/2021	1-001-5-07-359	SHF:TNG,INV,JAIL,UNIFORM,AMMO,			1,601.97
648	COMMERCE BANK-COMMER	COMMERCE BANK-COMMERCIAL CARDS	319374	91963 AP	04/28/2021	1-001-5-07-359	SHF:TNG,INV,JAIL,UNIFORM,AMMO,			680.92
648	COMMERCE BANK-COMMER	COMMERCE BANK-COMMERCIAL CARDS	319374	91963 AP	04/28/2021	1-001-5-07-359	SHF:TNG,INV,JAIL,UNIFORM,AMMO,			7.94
648	COMMERCE BANK-COMMER	COMMERCE BANK-COMMERCIAL CARDS	319374	91963 AP	04/28/2021	1-001-5-07-359	SHF:OFC SUPP,UNIF,POLICE EQUIP			346.01
648	COMMERCE BANK-COMMER	COMMERCE BANK-COMMERCIAL CARDS	319374	91963 AP	04/28/2021	1-001-5-07-362	SHF:TNG,INV,JAIL,UNIFORM,AMMO,			155.52
648	COMMERCE BANK-COMMER	COMMERCE BANK-COMMERCIAL CARDS	319374	91963 AP	04/28/2021	1-001-5-07-362	SHF:TNG,INV,JAIL,UNIFORM,AMMO,			50.00
648	COMMERCE BANK-COMMER	COMMERCE BANK-COMMERCIAL CARDS	319374	91963 AP	04/28/2021	1-001-5-07-362	SHF:OFC SUPP,UNIF,POLICE EQUIP			348.54
648	COMMERCE BANK-COMMER	COMMERCE BANK-COMMERCIAL CARDS	319374	91963 AP	04/28/2021	1-001-5-07-363	SHF:TNG,INV,JAIL,UNIFORM,AMMO,			687.88
648	COMMERCE BANK-COMMER	COMMERCE BANK-COMMERCIAL CARDS	319374	91963 AP	04/28/2021	1-001-5-07-403	INSPEED ANEMOMETERS FOR E911 V			49.00
648	COMMERCE BANK-COMMER	COMMERCE BANK-COMMERCIAL CARDS	319374	91963 AP	04/28/2021	1-001-5-11-301	CO ATTY - QUILL OFFICE SUPPLIE			2,021.97
648	COMMERCE BANK-COMMER	COMMERCE BANK-COMMERCIAL CARDS	319374	91963 AP	04/28/2021	1-001-5-14-212	REIMBURSED CHARGES-TERM EMPLOY			39.73
648	COMMERCE BANK-COMMER	COMMERCE BANK-COMMERCIAL CARDS	319374	91963 AP	04/28/2021	1-001-5-14-220	TONGANOXIE CITY - WATER SVC 72			63.29
648	COMMERCE BANK-COMMER	COMMERCE BANK-COMMERCIAL CARDS	319374	91963 AP	04/28/2021	1-001-5-14-228	MAILROOM, BUDGET, ELECTION SUP			17.79
648	COMMERCE BANK-COMMER	COMMERCE BANK-COMMERCIAL CARDS	319374	91963 AP	04/28/2021	1-001-5-14-228	MAILROOM, BUDGET, ELECTION SUP			25.72
648	COMMERCE BANK-COMMER	COMMERCE BANK-COMMERCIAL CARDS	319374	91963 AP	04/28/2021	1-001-5-14-229	WASTE MGMT - CTHSE TRASH/RECYC			458.99
648	COMMERCE BANK-COMMER	COMMERCE BANK-COMMERCIAL CARDS	319374	91963 AP	04/28/2021	1-001-5-14-259	CTHSE SECURITY:MISC HARDWARE			54.03
648	COMMERCE BANK-COMMER	COMMERCE BANK-COMMERCIAL CARDS	319374	91963 AP	04/28/2021	1-001-5-14-301	MAILROOM, BUDGET, ELECTION SUP			403.46
648	COMMERCE BANK-COMMER	COMMERCE BANK-COMMERCIAL CARDS	319374	91963 AP	04/28/2021	1-001-5-14-336	NOX WEED FUEL,TVL,LUBE,EQUIP P			15.01
648	COMMERCE BANK-COMMER	COMMERCE BANK-COMMERCIAL CARDS	319374	91963 AP	04/28/2021	1-001-5-18-213	DOMAIN REGISTRATION, POTS LINE			400.00
648	COMMERCE BANK-COMMER	COMMERCE BANK-COMMERCIAL CARDS	319374	91963 AP	04/28/2021	1-001-5-18-213	DOMAIN REGISTRATION, POTS LINE			93.48
648	COMMERCE BANK-COMMER	COMMERCE BANK-COMMERCIAL CARDS	319374	91963 AP	04/28/2021	1-001-5-18-213	DOMAIN REGISTRATION, POTS LINE			1,383.53
648	COMMERCE BANK-COMMER	COMMERCE BANK-COMMERCIAL CARDS	319374	91963 AP	04/28/2021	1-001-5-19-301	DIST CT - BLINDS			272.20
648	COMMERCE BANK-COMMER	COMMERCE BANK-COMMERCIAL CARDS	319374	91963 AP	04/28/2021	1-001-5-19-301	AIR FILTERS (DIST CT)			179.96
648	COMMERCE BANK-COMMER	COMMERCE BANK-COMMERCIAL CARDS	319374	91963 AP	04/28/2021	1-001-5-28-301	MIDDAY MEAL - BENEFITS MEETING			55.03
648	COMMERCE BANK-COMMER	COMMERCE BANK-COMMERCIAL CARDS	319374	91963 AP	04/28/2021	1-001-5-31-297	JC JANIT/BLDG SUPPLY,CTHSE,SAF			60.00
648	COMMERCE BANK-COMMER	COMMERCE BANK-COMMERCIAL CARDS	319374	91963 AP	04/28/2021	1-001-5-31-301	JC JANIT/BLDG SUPPLY,CTHSE,SAF			241.63
648	COMMERCE BANK-COMMER	COMMERCE BANK-COMMERCIAL CARDS	319374	91963 AP	04/28/2021	1-001-5-31-312	JC JANIT/BLDG SUPPLY,CTHSE,SAF			193.54
648	COMMERCE BANK-COMMER	COMMERCE BANK-COMMERCIAL CARDS	319374	91963 AP	04/28/2021	1-001-5-31-312	BG:CHILLER CLEANING SUITS,TILE			59.53
648	COMMERCE BANK-COMMER	COMMERCE BANK-COMMERCIAL CARDS	319374	91963 AP	04/28/2021	1-001-5-31-312	HERKEN: MATERIAL,HD,EMS,VEH/BL			1,081.21
648	COMMERCE BANK-COMMER	COMMERCE BANK-COMMERCIAL CARDS	319374	91963 AP	04/28/2021	1-001-5-31-313	HERKEN: MATERIAL,HD,EMS,VEH/BL			32.29
648	COMMERCE BANK-COMMER	COMMERCE BANK-COMMERCIAL CARDS	319374	91963 AP	04/28/2021	1-001-5-31-317	HERKEN: MATERIAL,HD,EMS,VEH/BL			67.53
648	COMMERCE BANK-COMMER	COMMERCE BANK-COMMERCIAL CARDS	319374	91963 AP	04/28/2021	1-001-5-31-320	HERKEN: MATERIAL,HD,EMS,VEH/BL			51.85
648	COMMERCE BANK-COMMER	COMMERCE BANK-COMMERCIAL CARDS	319374	91963 AP	04/28/2021	1-001-5-31-322	JC JANIT/BLDG SUPPLY,CTHSE,SAF			450.83
648	COMMERCE BANK-COMMER	COMMERCE BANK-COMMERCIAL CARDS	319374	91963 AP	04/28/2021	1-001-5-31-322	HERKEN: MATERIAL,HD,EMS,VEH/BL			70.21
648	COMMERCE BANK-COMMER	COMMERCE BANK-COMMERCIAL CARDS	319374	91963 AP	04/28/2021	1-001-5-31-383	JC JANIT/BLDG SUPPLY,CTHSE,SAF			28.08
648	COMMERCE BANK-COMMER	COMMERCE BANK-COMMERCIAL CARDS	319374	91963 AP	04/28/2021	1-001-5-31-390	JC JANIT/BLDG SUPPLY,CTHSE,SAF			1,023.55
648	COMMERCE BANK-COMMER	COMMERCE BANK-COMMERCIAL CARDS	319374	91963 AP	04/28/2021	1-001-5-31-390	HERKEN: MATERIAL,HD,EMS,VEH/BL			14.45
648	COMMERCE BANK-COMMER	COMMERCE BANK-COMMERCIAL CARDS	319374	91963 AP	04/28/2021	1-001-5-32-296	JC JANIT/BLDG SUPPLY,CTHSE,SAF			1,354.00
648	COMMERCE BANK-COMMER	COMMERCE BANK-COMMERCIAL CARDS	319374	91963 AP	04/28/2021	1-001-5-32-297	WASTE MANAGEMENT - JC DUMPSTER			312.64
648	COMMERCE BANK-COMMER	COMMERCE BANK-COMMERCIAL CARDS	319374	91963 AP	04/28/2021	1-001-5-32-391	JC JANIT/BLDG SUPPLY,CTHSE,SAF			274.78
648	COMMERCE BANK-COMMER	COMMERCE BANK-COMMERCIAL CARDS	319374	91963 AP	04/28/2021	1-001-5-32-391	BG:CHILLER CLEANING SUITS,TILE			285.47
648	COMMERCE BANK-COMMER	COMMERCE BANK-COMMERCIAL CARDS	319374	91963 AP	04/28/2021	1-001-5-32-391	HERKEN: MATERIAL,HD,EMS,VEH/BL			188.16
648	COMMERCE BANK-COMMER	COMMERCE BANK-COMMERCIAL CARDS	319374	91963 AP	04/28/2021	1-001-5-41-201	APPRAISER COPIES,KTA,COMPUTER			35.81

TYPES OF CHECKS SELECTED: \* ALL TYPES

			P.O.NUMBER	CHECK#						
648	COMMERCE BANK-COMMER	COMMERCE BANK-COMMERCIAL CARDS	319374	91963 AP	04/28/2021	1-001-5-41-211	APPRAISER COPIES, KTA, COMPUTER		5.10	
648	COMMERCE BANK-COMMER	COMMERCE BANK-COMMERCIAL CARDS	319374	91963 AP	04/28/2021	1-001-5-41-371	APPRAISER COPIES, KTA, COMPUTER		317.98	
648	COMMERCE BANK-COMMER	COMMERCE BANK-COMMERCIAL CARDS	319374	91963 AP	04/28/2021	1-001-5-41-371	APPRAISER COPIES, KTA, COMPUTER		253.85	
648	COMMERCE BANK-COMMER	COMMERCE BANK-COMMERCIAL CARDS	319374	91963 AP	04/28/2021	1-001-5-41-371	APPRAISER COPIES, KTA, COMPUTER		471.96	
648	COMMERCE BANK-COMMER	COMMERCE BANK-COMMERCIAL CARDS	319374	91963 AP	04/28/2021	1-001-5-49-301	MAILROOM, BUDGET, ELECTION SUP		24.99	
648	COMMERCE BANK-COMMER	COMMERCE BANK-COMMERCIAL CARDS	319374	91963 AP	04/28/2021	1-001-5-49-301	CALCULATOR, ENVELOPES, STAX RE		70.25	
648	COMMERCE BANK-COMMER	COMMERCE BANK-COMMERCIAL CARDS	319374	91963 AP	04/28/2021	1-001-5-53-211	NOX WEED FUEL, TVL, LUBE, EQUIP P		857.44	
648	COMMERCE BANK-COMMER	COMMERCE BANK-COMMERCIAL CARDS	319374	91963 AP	04/28/2021	1-001-5-53-306	NOX WEED FUEL, TVL, LUBE, EQUIP P		502.58	
648	COMMERCE BANK-COMMER	COMMERCE BANK-COMMERCIAL CARDS	319374	91963 AP	04/28/2021	1-001-5-53-308	NOX WEED FUEL, TVL, LUBE, EQUIP P		129.51	
648	COMMERCE BANK-COMMER	COMMERCE BANK-COMMERCIAL CARDS	319374	91963 AP	04/28/2021	1-001-5-82-301	TRAILER ASSIST (BG)		154.99	
							*** VENDOR	648 TOTAL		46,512.71
30100	ELECTION WORKER	CORRINE E GUNNING	319347	91944 AP	04/27/2021	0-001-5-49-341	REPLACEMENT ELECTION WORKER CK		15.00	
30100	ELECTION WORKER	CORRINE E GUNNING	319347	91944 AP	04/27/2021	0-001-5-49-341	REPLACEMENT ELECTION WORKER CK		125.00	
							*** VENDOR	30100 TOTAL		140.00
2900	EMS OVERPAYMENT	HMS	319377	91966 AP	04/28/2021	1-001-5-05-290	REFUND ON BEHALF/CIGNA 2020-16		189.56	
2900	EMS OVERPAYMENT	UNITED HEALTHCARE	319378	91967 AP	04/28/2021	1-001-5-05-290	REFUND - COVERAGE TERMINATED		974.40	
							*** VENDOR	2900 TOTAL		1,163.96
86	EVERGY	EVERGY KANSAS CENTRAL INC	319379	91968 AP	04/28/2021	1-001-5-14-220	ELEC SVC 300 WALNUT		7,085.87	
86	EVERGY	EVERGY KANSAS CENTRAL INC	319379	91968 AP	04/28/2021	1-001-5-32-392	JUSTICE CENTER ELECTRICITY		17,425.30	
86	EVERGY	EVERGY KANSAS CENTRAL INC	319379	91968 AP	04/28/2021	1-001-5-53-219	ELEC SVC NOX WEED		203.64	
							*** VENDOR	86 TOTAL		24,714.81
1011	FEDEX	FEDEX	319381	91970 AP	04/28/2021	1-001-5-19-302	2389-5871-7 TRANSPORTATION CHA		31.90	
1011	FEDEX	FEDEX	319381	91970 AP	04/28/2021	1-001-5-19-302	2389-5871-7 TRANSPORTATION CHA		31.67	
							*** VENDOR	1011 TOTAL		63.57
5824	FRONTIER	FORENSIC MEDICAL HOLDINGS OF K	319384	91973 AP	04/28/2021	1-001-5-13-271	INV 17400 MARCH AUTOPSIES,ETC		1,850.00	
5824	FRONTIER	FORENSIC MEDICAL HOLDINGS OF K	319384	91973 AP	04/28/2021	1-001-5-13-271	INV 17400 MARCH AUTOPSIES,ETC		1,850.00	
5824	FRONTIER	FORENSIC MEDICAL HOLDINGS OF K	319384	91973 AP	04/28/2021	1-001-5-13-271	INV 17400 MARCH AUTOPSIES,ETC		1,850.00	
5824	FRONTIER	FORENSIC MEDICAL HOLDINGS OF K	319384	91973 AP	04/28/2021	1-001-5-13-271	INV 17400 MARCH AUTOPSIES,ETC		1,850.00	
5824	FRONTIER	FORENSIC MEDICAL HOLDINGS OF K	319384	91973 AP	04/28/2021	1-001-5-13-271	INV 17400 MARCH AUTOPSIES,ETC		50.00	
5824	FRONTIER	FORENSIC MEDICAL HOLDINGS OF K	319384	91973 AP	04/28/2021	1-001-5-13-271	INV 17400 MARCH AUTOPSIES,ETC		50.00	
5824	FRONTIER	FORENSIC MEDICAL HOLDINGS OF K	319384	91973 AP	04/28/2021	1-001-5-13-271	INV 17400 MARCH AUTOPSIES,ETC		50.00	
5824	FRONTIER	FORENSIC MEDICAL HOLDINGS OF K	319384	91973 AP	04/28/2021	1-001-5-13-271	INV 17400 MARCH AUTOPSIES,ETC		25.00	
5824	FRONTIER	FORENSIC MEDICAL HOLDINGS OF K	319384	91973 AP	04/28/2021	1-001-5-13-271	INV 17400 MARCH AUTOPSIES,ETC		25.00	
							*** VENDOR	5824 TOTAL		7,600.00
4465	GRONIS	GRONIS HARDWARE INC	319386	91975 AP	04/28/2021	1-001-5-07-359	JAIL SUPPLIES		11.07	
4465	GRONIS	GRONIS HARDWARE INC	319386	91975 AP	04/28/2021	1-001-5-07-359	JAIL SUPPLIES		31.48	
							*** VENDOR	4465 TOTAL		42.55
27	HEALTH DEPT	LEAV CO HEALTH DEPT	319388	91978 AP	04/28/2021	1-001-5-31-290	B&G EMPLOYEE IMMUNIZATION		70.00	
191	HOME DEPOT	HOME DEPOT USA	319392	91982 AP	04/28/2021	1-001-5-07-355	1137682 SOAP, ORGANIZER, REFUND		283.75	
191	HOME DEPOT	HOME DEPOT USA	319392	91982 AP	04/28/2021	1-001-5-07-355	1137682 SOAP, ORGANIZER, REFUND		103.71-	
191	HOME DEPOT	HOME DEPOT USA	319392	91982 AP	04/28/2021	1-001-5-07-355	1137682 SOAP, ORGANIZER, REFUND		1,087.32	
191	HOME DEPOT	HOME DEPOT USA	319392	91982 AP	04/28/2021	1-001-5-07-359	1137682 SOAP, ORGANIZER, REFUND		36.25	
191	HOME DEPOT	HOME DEPOT USA	319392	91982 AP	04/28/2021	1-001-5-07-359	1137682 SOAP, ORGANIZER, REFUND		42.89-	
191	HOME DEPOT	HOME DEPOT USA	319392	91982 AP	04/28/2021	1-001-5-07-359	1137682 SOAP, ORGANIZER, REFUND		103.71	
191	HOME DEPOT	HOME DEPOT USA	319392	91982 AP	04/28/2021	1-001-5-07-359	1137682 SOAP, ORGANIZER, REFUND		1,087.32-	
							*** VENDOR	191 TOTAL		277.11
236	INTERPRETERS	INTERPRETERS INC	319394	91984 AP	04/28/2021	1-001-5-19-221	INTERPRETER 4/21/21 2020TR911		130.00	
236	INTERPRETERS	INTERPRETERS INC	319394	91984 AP	04/28/2021	1-001-5-19-221	INTERPRETER 4/22/21 2020LM1039		130.00	
236	INTERPRETERS	INTERPRETERS INC	319394	91984 AP	04/28/2021	1-001-5-19-221	INTERPRETER 4/21/21 2021TR074		120.00	
							*** VENDOR	236 TOTAL		380.00
4364	KLOTZ AGEN	THE KLOTZ AGENCY INC	319399	91989 AP	04/28/2021	1-001-5-11-203	NOTARY FILING FEES (CO ATTY OF		25.00	
4364	KLOTZ AGEN	THE KLOTZ AGENCY INC	319399	91989 AP	04/28/2021	1-001-5-11-203	NOTARY FILING FEES (CO ATTY OF		25.00	

TYPES OF CHECKS SELECTED: \* ALL TYPES

		P.O.NUMBER	CHECK#							
				*** VENDOR				4364 TOTAL		50.00
220	LEAV CO EX	LEAVENWORTH COUNTY EXTENSION	319400	91990 AP	04/28/2021	1-001-5-25-220	PER 2021 LVCO BUDGET	61,016.25		
745	LEAV CO MUTUAL AID	LEAVENWORTH CO MUTUAL AID FIRE	319401	91991 AP	04/28/2021	1-001-5-05-203	LEAV CO EMS DUES	420.00		
4755	LEAV PAPER	LEAVENWORTH PAPER AND OFFICE S	319402	91992 AP	04/28/2021	1-001-5-07-301	JAIL AND OFFICE SUPPLIES	54.33		
4755	LEAV PAPER	LEAVENWORTH PAPER AND OFFICE S	319402	91992 AP	04/28/2021	1-001-5-07-305	JAIL AND OFFICE SUPPLIES	125.36		
4755	LEAV PAPER	LEAVENWORTH PAPER AND OFFICE S	319402	91992 AP	04/28/2021	1-001-5-07-359	JAIL AND OFFICE SUPPLIES	73.80		
4755	LEAV PAPER	LEAVENWORTH PAPER AND OFFICE S	319402	91992 AP	04/28/2021	1-001-5-07-359	JAIL AND OFFICE SUPPLIES	107.10		
4755	LEAV PAPER	LEAVENWORTH PAPER AND OFFICE S	319402	91992 AP	04/28/2021	1-001-5-07-359	JAIL AND OFFICE SUPPLIES	3,656.00		
4755	LEAV PAPER	LEAVENWORTH PAPER AND OFFICE S	319402	91992 AP	04/28/2021	1-001-5-07-359	JAIL AND OFFICE SUPPLIES	1,387.20		
4755	LEAV PAPER	LEAVENWORTH PAPER AND OFFICE S	319402	91992 AP	04/28/2021	1-001-5-07-359	JAIL AND OFFICE SUPPLIES	144.11		
4755	LEAV PAPER	LEAVENWORTH PAPER AND OFFICE S	319402	91992 AP	04/28/2021	1-001-5-07-359	JAIL AND OFFICE SUPPLIES	39.00		
4755	LEAV PAPER	LEAVENWORTH PAPER AND OFFICE S	319402	91992 AP	04/28/2021	1-001-5-14-228	CO CLERK - BUDGET BINDERS, THER	68.41		
4755	LEAV PAPER	LEAVENWORTH PAPER AND OFFICE S	319402	91992 AP	04/28/2021	1-001-5-19-301	DIST CT CSO OFFICE SUPPLIES	1,441.88		
				*** VENDOR				4755 TOTAL		7,097.19
537	LEAV TIMES	LEAVENWORTH TIMES	319403	91993 AP	04/28/2021	1-001-5-06-218	ACCT 267:PUBLIC HEARINGS,NOTIC	16.65		
537	LEAV TIMES	LEAVENWORTH TIMES	319403	91993 AP	04/28/2021	1-001-5-06-218	ACCT 267:PUBLIC HEARINGS,NOTIC	17.55		
537	LEAV TIMES	LEAVENWORTH TIMES	319403	91993 AP	04/28/2021	1-001-5-06-218	ACCT 267:PUBLIC HEARINGS,NOTIC	20.70		
537	LEAV TIMES	LEAVENWORTH TIMES	319403	91993 AP	04/28/2021	1-001-5-06-218	ACCT 267:PUBLIC HEARINGS,NOTIC	28.80		
537	LEAV TIMES	LEAVENWORTH TIMES	319403	91993 AP	04/28/2021	1-001-5-06-218	ACCT 267:PUBLIC HEARINGS,NOTIC	18.45		
537	LEAV TIMES	LEAVENWORTH TIMES	319403	91993 AP	04/28/2021	1-001-5-06-218	ACCT 267:PUBLIC HEARINGS,NOTIC	19.35		
537	LEAV TIMES	LEAVENWORTH TIMES	319403	91993 AP	04/28/2021	1-001-5-06-218	ACCT 267:PUBLIC HEARINGS,NOTIC	18.00		
537	LEAV TIMES	LEAVENWORTH TIMES	319403	91993 AP	04/28/2021	1-001-5-53-216	537 ACT 562 NOX WEED PUBLICATI	50.60		
				*** VENDOR				537 TOTAL		190.10
2059	MIDWEST OFFICE TECH	MIDWEST OFFICE TECHNOLOGY INC	319408	91998 AP	04/28/2021	1-001-5-01-201	OPK595_K BOCC COPIER MAINT	160.22		
2059	MIDWEST OFFICE TECH	MIDWEST OFFICE TECHNOLOGY INC	319408	91998 AP	04/28/2021	1-001-5-49-301	OPL303_K ELECTION COPIER MAINT	12.81		
				*** VENDOR				2059 TOTAL		173.03
2666	MISC REIMBURSEMENTS	KYLE HARDISTY	319410	92000 AP	04/28/2021	1-001-5-53-211	PER DIEM - WEED BASIC TRAINING	52.00		
2666	MISC REIMBURSEMENTS	KYLE HARDISTY	319410	92000 AP	04/28/2021	1-001-5-53-211	PER DIEM - WEED BASIC TRAINING	70.00		
2666	MISC REIMBURSEMENTS	KYLE HARDISTY	319410	92000 AP	04/28/2021	1-001-5-53-211	PER DIEM - WEED BASIC TRAINING	92.00		
2666	MISC REIMBURSEMENTS	SHAWN BAUSWELL	319411	92001 AP	04/28/2021	1-001-5-53-211	PER DIEM - WEED BASIC TRAINING	52.00		
2666	MISC REIMBURSEMENTS	SHAWN BAUSWELL	319411	92001 AP	04/28/2021	1-001-5-53-211	PER DIEM - WEED BASIC TRAINING	70.00		
2666	MISC REIMBURSEMENTS	SHAWN BAUSWELL	319411	92001 AP	04/28/2021	1-001-5-53-211	PER DIEM - WEED BASIC TRAINING	92.00		
				*** VENDOR				2666 TOTAL		428.00
398	NETSTANDARD INC	NETSTANDARD INC	319414	92004 AP	04/28/2021	1-001-5-14-721	VITAL/STRATEGIC SERVICES	5,150.00		
398	NETSTANDARD INC	NETSTANDARD INC	319414	92004 AP	04/28/2021	1-001-5-14-721	VITAL/STRATEGIC SERVICES	28,320.00		
				*** VENDOR				398 TOTAL		33,470.00
7098	QUILL CORP	QUILL CORP	319416	92006 AP	04/28/2021	1-001-5-28-301	5643954 HR TONER, KITCHEN/OFFIC	429.33		
7098	QUILL CORP	QUILL CORP	319416	92006 AP	04/28/2021	1-001-5-28-301	5643954 HR TONER, KITCHEN/OFFIC	19.99		
				*** VENDOR				7098 TOTAL		449.32
6148	SHERIFF	LEAV CO SHERIFF DEPT	319419	92009 AP	04/28/2021	1-001-5-07-211	REIM MEALS, DRUG BUY MONEY	91.98		
6148	SHERIFF	LEAV CO SHERIFF DEPT	319419	92009 AP	04/28/2021	1-001-5-07-211	REIM MEALS, DRUG BUY MONEY	95.54		
6148	SHERIFF	LEAV CO SHERIFF DEPT	319419	92009 AP	04/28/2021	1-001-5-07-251	REIM MEALS, DRUG BUY MONEY	300.00		
				*** VENDOR				6148 TOTAL		487.52
248	SUMMIT FOOD	ELIOR, INC	319420	92010 AP	04/28/2021	1-001-5-07-261	C74100 INMATE MEALS 4.10-4.16	5,383.82		
376	SYMMETRY	ATHENS ENERGY SERVICES HOLDING	319421	92011 AP	04/28/2021	1-001-5-33-392	413714 GAS SVC 711 MARSHALL (C	2,074.54		
23432	TANGENT CO	TANGENT COMPUTER	319422	92012 AP	04/28/2021	1-001-5-18-254	LECO005 SPAM FILTER SUBSCRIPTI	1,540.00		
100	WITNESS LIST									

warrants by vendor

TYPES OF CHECKS SELECTED: \* ALL TYPES

		P.O.NUMBER	CHECK#							
100	WITNESS LIST							*** VENDOR	100 TOTAL	432.60
								TOTAL FUND 001		197,327.19
-----										
648	COMMERCE BANK-COMMER	COMMERCE BANK-COMMER	COMMERCE BANK-COMMERCIAL CARDS	319374	91963 AP	04/28/2021	1-108-5-00-213	HEALTH DEPT: IMM, CONTRACTUAL, WI		31.98
648	COMMERCE BANK-COMMER	COMMERCE BANK-COMMER	COMMERCE BANK-COMMERCIAL CARDS	319374	91963 AP	04/28/2021	1-108-5-00-219	AT&T MOBILITY - HEALTH DEPT		165.11
648	COMMERCE BANK-COMMER	COMMERCE BANK-COMMER	COMMERCE BANK-COMMERCIAL CARDS	319374	91963 AP	04/28/2021	1-108-5-00-219	HEALTH DEPT: IMM, CONTRACTUAL, WI		300.37
648	COMMERCE BANK-COMMER	COMMERCE BANK-COMMER	COMMERCE BANK-COMMERCIAL CARDS	319374	91963 AP	04/28/2021	1-108-5-00-280	HEALTH DEPT: IMM, CONTRACTUAL, WI		1,066.37
648	COMMERCE BANK-COMMER	COMMERCE BANK-COMMER	COMMERCE BANK-COMMERCIAL CARDS	319374	91963 AP	04/28/2021	1-108-5-00-301	HEALTH DEPT: IMM, CONTRACTUAL, WI		2,803.55
648	COMMERCE BANK-COMMER	COMMERCE BANK-COMMER	COMMERCE BANK-COMMERCIAL CARDS	319374	91963 AP	04/28/2021	1-108-5-00-380	HEALTH DEPT: IMM, CONTRACTUAL, WI		1,664.80
648	COMMERCE BANK-COMMER	COMMERCE BANK-COMMER	COMMERCE BANK-COMMERCIAL CARDS	319374	91963 AP	04/28/2021	1-108-5-00-384	HEALTH DEPT: IMM, CONTRACTUAL, WI		1,267.85
648	COMMERCE BANK-COMMER	COMMERCE BANK-COMMER	COMMERCE BANK-COMMERCIAL CARDS	319374	91963 AP	04/28/2021	1-108-5-00-601	HEALTH DEPT: IMM, CONTRACTUAL, WI		371.97
648	COMMERCE BANK-COMMER	COMMERCE BANK-COMMER	COMMERCE BANK-COMMERCIAL CARDS	319374	91963 AP	04/28/2021	1-108-5-00-604	HEALTH DEPT: IMM, CONTRACTUAL, WI		200.95
648	COMMERCE BANK-COMMER	COMMERCE BANK-COMMER	COMMERCE BANK-COMMERCIAL CARDS	319374	91963 AP	04/28/2021	1-108-5-00-606	HEALTH DEPT: IMM, CONTRACTUAL, WI		569.03
648	COMMERCE BANK-COMMER	COMMERCE BANK-COMMER	COMMERCE BANK-COMMERCIAL CARDS	319374	91963 AP	04/28/2021	1-108-5-00-606	WIC - TOTES		198.00
648	COMMERCE BANK-COMMER	COMMERCE BANK-COMMER	COMMERCE BANK-COMMERCIAL CARDS	319374	91963 AP	04/28/2021	1-108-5-00-610	HATTOK: CLIENT SVCS, TRAINING, WM		1,061.00
648	COMMERCE BANK-COMMER	COMMERCE BANK-COMMER	COMMERCE BANK-COMMERCIAL CARDS	319374	91963 AP	04/28/2021	1-108-5-00-610	HATTOK: CLIENT SVCS, TRAINING, WM		160.00
648	COMMERCE BANK-COMMER	COMMERCE BANK-COMMER	COMMERCE BANK-COMMERCIAL CARDS	319374	91963 AP	04/28/2021	1-108-5-00-610	HATTOK: CLIENT SVCS, TRAINING, WM		69.60-
648	COMMERCE BANK-COMMER	COMMERCE BANK-COMMER	COMMERCE BANK-COMMERCIAL CARDS	319374	91963 AP	04/28/2021	1-108-5-00-610	HATTOK: CLIENT SVCS, TRAINING, WM		2,078.41
								*** VENDOR	648 TOTAL	11,869.79
								TOTAL FUND 108		11,869.79
-----										
24545	CDW GOVERN	CDW GOVERNMENT INC		319373	91957 AP	04/28/2021	1-115-5-00-409	3773122 LAPTOPS		2,560.50
24545	CDW GOVERN	CDW GOVERNMENT INC		319373	91957 AP	04/28/2021	1-115-5-00-409	3773122 HARDWARE/SOFTWARE, DIS		1,203.92
24545	CDW GOVERN	CDW GOVERNMENT INC		319373	91957 AP	04/28/2021	1-115-5-00-409	3773122 HARDWARE/SOFTWARE, DIS		611.76
								*** VENDOR	24545 TOTAL	4,376.18
648	COMMERCE BANK-COMMER	COMMERCE BANK-COMMER	COMMERCE BANK-COMMERCIAL CARDS	319374	91963 AP	04/28/2021	1-115-5-00-408	NATIONWIDE INDUSTRIAL: LAUNDRY		5,916.45
								TOTAL FUND 115		10,292.63
-----										
843	FIDLAR	FIDLAR		319383	91972 AP	04/28/2021	1-119-5-00-252	2010343 LIFECYCLE TO APR 2022,		27,977.00
843	FIDLAR	FIDLAR		319383	91972 AP	04/28/2021	1-119-5-00-252	2010343 LIFECYCLE TO APR 2022,		16,536.25-
843	FIDLAR	FIDLAR		319383	91972 AP	04/28/2021	1-119-5-00-252	2010343 LIFECYCLE TO APR 2022,		15,000.00
								*** VENDOR	843 TOTAL	26,440.75
								TOTAL FUND 119		26,440.75
-----										
648	COMMERCE BANK-COMMER	COMMERCE BANK-COMMER	COMMERCE BANK-COMMERCIAL CARDS	319374	91963 AP	04/28/2021	1-126-5-00-210	COMM CORR COMMUNICATIONS -VERI		40.01
648	COMMERCE BANK-COMMER	COMMERCE BANK-COMMER	COMMERCE BANK-COMMERCIAL CARDS	319374	91963 AP	04/28/2021	1-126-5-00-210	COMM CORR COMMS, SUPPLIES, TRAIN		94.09
648	COMMERCE BANK-COMMER	COMMERCE BANK-COMMER	COMMERCE BANK-COMMERCIAL CARDS	319374	91963 AP	04/28/2021	1-126-5-00-222	COMM CORR COMMS, SUPPLIES, TRAIN		44.00
648	COMMERCE BANK-COMMER	COMMERCE BANK-COMMER	COMMERCE BANK-COMMERCIAL CARDS	319374	91963 AP	04/28/2021	1-126-5-00-223	COMM CORR COMMS, SUPPLIES, TRAIN		79.90
648	COMMERCE BANK-COMMER	COMMERCE BANK-COMMER	COMMERCE BANK-COMMERCIAL CARDS	319374	91963 AP	04/28/2021	1-126-5-00-321	COMM CORR COMMS, SUPPLIES, TRAIN		6.99
								*** VENDOR	648 TOTAL	264.99
2505	INTRINSIC INTERVENTI	INTRINSIC INTERVENTIONS		319395	91985 AP	04/28/2021	1-126-5-00-226	SMART SCREEN UA TEST CUPS		316.00
								TOTAL FUND 126		580.99
-----										
7158	A-1 RENTAL	A-1 RENTAL		319361	91945 AP	04/28/2021	1-133-5-00-214	4-33 MONTHLY TOILET RENTAL		100.00
7158	A-1 RENTAL	A-1 RENTAL		319361	91945 AP	04/28/2021	1-133-5-00-214	4-33 MONTHLY TOILET RENTAL		100.00
								*** VENDOR	7158 TOTAL	200.00

warrants by vendor

TYPES OF CHECKS SELECTED: \* ALL TYPES

			P.O.NUMBER	CHECK#					
25797	BERRY TRAC	BERRY TRACTOR & EQUIPMENT	319364	91948 AP	04/28/2021	1-133-5-00-360	4-34	066692 BROOM PARTS	1,843.77
4136	BRANDT FAB	BRANDT FABRICATING	319369	91953 AP	04/28/2021	1-133-5-00-360	4-35	5 SPREADER HITCHES	1,850.00
26521	BRUNSON BU	BRUNSON BUILDERS INC	319370	91954 AP	04/28/2021	1-133-5-00-440	4-36	REMOVE/REPL WALK DOOR EAS	3,667.00
648	COMMERCE BANK-COMMER	COMMERCE BANK-COMMERCIAL CARDS	319374	91963 AP	04/28/2021	1-133-5-00-203	4-31	SOFTWARE, DUES, PARTS, TRASH	69.29
648	COMMERCE BANK-COMMER	COMMERCE BANK-COMMERCIAL CARDS	319374	91963 AP	04/28/2021	1-133-5-00-207	4-30	PARTS, TOOLS, FACILITY, ASP	336.60
648	COMMERCE BANK-COMMER	COMMERCE BANK-COMMERCIAL CARDS	319374	91963 AP	04/28/2021	1-133-5-00-209	4-31	SOFTWARE, DUES, PARTS, TRASH	206.75
648	COMMERCE BANK-COMMER	COMMERCE BANK-COMMERCIAL CARDS	319374	91963 AP	04/28/2021	1-133-5-00-209	4-31	SOFTWARE, DUES, PARTS, TRASH	165.83
648	COMMERCE BANK-COMMER	COMMERCE BANK-COMMERCIAL CARDS	319374	91963 AP	04/28/2021	1-133-5-00-211	4-31	SOFTWARE, DUES, PARTS, TRASH	1,728.00
648	COMMERCE BANK-COMMER	COMMERCE BANK-COMMERCIAL CARDS	319374	91963 AP	04/28/2021	1-133-5-00-214	4-31	SOFTWARE, DUES, PARTS, TRASH	166.05
648	COMMERCE BANK-COMMER	COMMERCE BANK-COMMERCIAL CARDS	319374	91963 AP	04/28/2021	1-133-5-00-214	4-31	SOFTWARE, DUES, PARTS, TRASH	166.05
648	COMMERCE BANK-COMMER	COMMERCE BANK-COMMERCIAL CARDS	319374	91963 AP	04/28/2021	1-133-5-00-301	4-30	PARTS, TOOLS, FACILITY, ASP	318.85
648	COMMERCE BANK-COMMER	COMMERCE BANK-COMMERCIAL CARDS	319374	91963 AP	04/28/2021	1-133-5-00-301	4-32	TIRES, SHOP/OFC SUPPLY, EQU	18.95
648	COMMERCE BANK-COMMER	COMMERCE BANK-COMMERCIAL CARDS	319374	91963 AP	04/28/2021	1-133-5-00-301	4-32	TIRES, SHOP/OFC SUPPLY, EQU	5.65
648	COMMERCE BANK-COMMER	COMMERCE BANK-COMMERCIAL CARDS	319374	91963 AP	04/28/2021	1-133-5-00-301	4-31	SOFTWARE, DUES, PARTS, TRASH	714.80
648	COMMERCE BANK-COMMER	COMMERCE BANK-COMMERCIAL CARDS	319374	91963 AP	04/28/2021	1-133-5-00-301	4-31	SOFTWARE, DUES, PARTS, TRASH	4,252.13
648	COMMERCE BANK-COMMER	COMMERCE BANK-COMMERCIAL CARDS	319374	91963 AP	04/28/2021	1-133-5-00-309	4-30	PARTS, TOOLS, FACILITY, ASP	654.57
648	COMMERCE BANK-COMMER	COMMERCE BANK-COMMERCIAL CARDS	319374	91963 AP	04/28/2021	1-133-5-00-309	4-32	TIRES, SHOP/OFC SUPPLY, EQU	519.56
648	COMMERCE BANK-COMMER	COMMERCE BANK-COMMERCIAL CARDS	319374	91963 AP	04/28/2021	1-133-5-00-311	4-30	PARTS, TOOLS, FACILITY, ASP	195.49
648	COMMERCE BANK-COMMER	COMMERCE BANK-COMMERCIAL CARDS	319374	91963 AP	04/28/2021	1-133-5-00-312	4-30	PARTS, TOOLS, FACILITY, ASP	1,127.86
648	COMMERCE BANK-COMMER	COMMERCE BANK-COMMERCIAL CARDS	319374	91963 AP	04/28/2021	1-133-5-00-312	4-30	PARTS, TOOLS, FACILITY, ASP	93.25
648	COMMERCE BANK-COMMER	COMMERCE BANK-COMMERCIAL CARDS	319374	91963 AP	04/28/2021	1-133-5-00-312	4-32	TIRES, SHOP/OFC SUPPLY, EQU	139.00
648	COMMERCE BANK-COMMER	COMMERCE BANK-COMMERCIAL CARDS	319374	91963 AP	04/28/2021	1-133-5-00-314	4-31	SOFTWARE, DUES, PARTS, TRASH	166.05-
648	COMMERCE BANK-COMMER	COMMERCE BANK-COMMERCIAL CARDS	319374	91963 AP	04/28/2021	1-133-5-00-326	4-30	PARTS, TOOLS, FACILITY, ASP	56.39
648	COMMERCE BANK-COMMER	COMMERCE BANK-COMMERCIAL CARDS	319374	91963 AP	04/28/2021	1-133-5-00-326	4-30	PARTS, TOOLS, FACILITY, ASP	259.97
648	COMMERCE BANK-COMMER	COMMERCE BANK-COMMERCIAL CARDS	319374	91963 AP	04/28/2021	1-133-5-00-360	4-30	PARTS, TOOLS, FACILITY, ASP	4,826.29
648	COMMERCE BANK-COMMER	COMMERCE BANK-COMMERCIAL CARDS	319374	91963 AP	04/28/2021	1-133-5-00-360	4-32	TIRES, SHOP/OFC SUPPLY, EQU	537.97-
648	COMMERCE BANK-COMMER	COMMERCE BANK-COMMERCIAL CARDS	319374	91963 AP	04/28/2021	1-133-5-00-360	4-31	SOFTWARE, DUES, PARTS, TRASH	1,801.38
648	COMMERCE BANK-COMMER	COMMERCE BANK-COMMERCIAL CARDS	319374	91963 AP	04/28/2021	1-133-5-00-362	4-30	PARTS, TOOLS, FACILITY, ASP	1,496.88
648	COMMERCE BANK-COMMER	COMMERCE BANK-COMMERCIAL CARDS	319374	91963 AP	04/28/2021	1-133-5-00-364	4-31	SOFTWARE, DUES, PARTS, TRASH	149.97
648	COMMERCE BANK-COMMER	COMMERCE BANK-COMMERCIAL CARDS	319374	91963 AP	04/28/2021	1-133-5-00-364	4-31	SOFTWARE, DUES, PARTS, TRASH	207.94
648	COMMERCE BANK-COMMER	COMMERCE BANK-COMMERCIAL CARDS	319374	91963 AP	04/28/2021	1-133-5-00-365	4-30	PARTS, TOOLS, FACILITY, ASP	629.14
648	COMMERCE BANK-COMMER	COMMERCE BANK-COMMERCIAL CARDS	319374	91963 AP	04/28/2021	1-133-5-00-365	4-30	PARTS, TOOLS, FACILITY, ASP	149.98
648	COMMERCE BANK-COMMER	COMMERCE BANK-COMMERCIAL CARDS	319374	91963 AP	04/28/2021	1-133-5-00-440	4-30	PARTS, TOOLS, FACILITY, ASP	65.94
								*** VENDOR 648 TOTAL	19,818.54
3998	DREXEL TEC	DREXEL TECHNOLOGIES INC	319376	91965 AP	04/28/2021	1-133-5-00-208	4-38	28984 POSTING K-45 REPL P	12.64
20263	FASTENAL	FASTENAL	319380	91969 AP	04/28/2021	1-133-5-00-363	4-39	KSLEA0276 SIGN MATERIAL	509.76
290	FELDMANS	FELDMANS	319382	91971 AP	04/28/2021	1-133-5-00-364	4-40	30336 SAFETY BOOTS - HOEL	165.00
26523	GARY SERVAES ENTERPR	GARY SERVAES ENTERPRISES	319385	91974 AP	04/28/2021	1-133-5-00-318	4-41	MARCH ROCK/DUST CONTROL	987.53
26523	GARY SERVAES ENTERPR	GARY SERVAES ENTERPRISES	319385	91974 AP	04/28/2021	1-133-5-00-361	4-41	MARCH ROCK/DUST CONTROL	1,616.64
								*** VENDOR 26523 TOTAL	2,604.17
434	HAMM QUARR	HAMM QUARRIES	319387	91977 AP	04/28/2021	1-133-5-00-318	4-42	300467 DUST CONTROL, ROCK	450.90
434	HAMM QUARR	HAMM QUARRIES	319387	91977 AP	04/28/2021	1-133-5-00-318	4-42	300467 DUST CONTROL, ROCK	920.64
434	HAMM QUARR	HAMM QUARRIES	319387	91977 AP	04/28/2021	1-133-5-00-318	4-42	300467 DUST CONTROL, ROCK	1,103.11
434	HAMM QUARR	HAMM QUARRIES	319387	91977 AP	04/28/2021	1-133-5-00-318	4-42	300467 DUST CONTROL, ROCK	239.56
434	HAMM QUARR	HAMM QUARRIES	319387	91977 AP	04/28/2021	1-133-5-00-318	4-42	300467 DUST CONTROL, ROCK	1,976.90
434	HAMM QUARR	HAMM QUARRIES	319387	91977 AP	04/28/2021	1-133-5-00-318	4-42	300467 DUST CONTROL, ROCK	1,770.83
434	HAMM QUARR	HAMM QUARRIES	319387	91977 AP	04/28/2021	1-133-5-00-318	4-42	300467 DUST CONTROL, ROCK	1,462.40
434	HAMM QUARR	HAMM QUARRIES	319387	91977 AP	04/28/2021	1-133-5-00-318	4-42	300467 DUST CONTROL, ROCK	1,032.06
434	HAMM QUARR	HAMM QUARRIES	319387	91977 AP	04/28/2021	1-133-5-00-318	4-42	300467 DUST CONTROL, ROCK	2,769.81
434	HAMM QUARR	HAMM QUARRIES	319387	91977 AP	04/28/2021	1-133-5-00-318	4-42	300467 DUST CONTROL, ROCK	1,464.68
434	HAMM QUARR	HAMM QUARRIES	319387	91977 AP	04/28/2021	1-133-5-00-318	4-42	300467 DUST CONTROL, ROCK	2,303.86
434	HAMM QUARR	HAMM QUARRIES	319387	91977 AP	04/28/2021	1-133-5-00-318	4-42	300467 DUST CONTROL, ROCK	3,573.29

TYPES OF CHECKS SELECTED: \* ALL TYPES

			P.O.NUMBER	CHECK#					
434	HAMM QUARR	HAMM QUARRIES	319387	91977 AP	04/28/2021	1-133-5-00-318	4-42 300467 DUST CONTROL, ROCK	2,793.80	
434	HAMM QUARR	HAMM QUARRIES	319387	91977 AP	04/28/2021	1-133-5-00-318	4-43 300467 DUST CONTROL, ROCK	960.80	
434	HAMM QUARR	HAMM QUARRIES	319387	91977 AP	04/28/2021	1-133-5-00-318	4-43 300467 DUST CONTROL, ROCK	191.46	
434	HAMM QUARR	HAMM QUARRIES	319387	91977 AP	04/28/2021	1-133-5-00-318	4-43 300467 DUST CONTROL, ROCK	164.74	
434	HAMM QUARR	HAMM QUARRIES	319387	91977 AP	04/28/2021	1-133-5-00-318	4-43 300467 DUST CONTROL, ROCK	125.59	
434	HAMM QUARR	HAMM QUARRIES	319387	91977 AP	04/28/2021	1-133-5-00-318	4-43 300467 DUST CONTROL, ROCK	779.81	
434	HAMM QUARR	HAMM QUARRIES	319387	91977 AP	04/28/2021	1-133-5-00-361	4-42 300467 DUST CONTROL, ROCK	780.43	
434	HAMM QUARR	HAMM QUARRIES	319387	91977 AP	04/28/2021	1-133-5-00-361	4-42 300467 DUST CONTROL, ROCK	2,062.06	
434	HAMM QUARR	HAMM QUARRIES	319387	91977 AP	04/28/2021	1-133-5-00-361	4-42 300467 DUST CONTROL, ROCK	165.13	
434	HAMM QUARR	HAMM QUARRIES	319387	91977 AP	04/28/2021	1-133-5-00-361	4-42 300467 DUST CONTROL, ROCK	441.43	
434	HAMM QUARR	HAMM QUARRIES	319387	91977 AP	04/28/2021	1-133-5-00-361	4-42 300467 DUST CONTROL, ROCK	1,315.32	
434	HAMM QUARR	HAMM QUARRIES	319387	91977 AP	04/28/2021	1-133-5-00-361	4-42 300467 DUST CONTROL, ROCK	2,172.56	
434	HAMM QUARR	HAMM QUARRIES	319387	91977 AP	04/28/2021	1-133-5-00-361	4-42 300467 DUST CONTROL, ROCK	221.14	
434	HAMM QUARR	HAMM QUARRIES	319387	91977 AP	04/28/2021	1-133-5-00-361	4-42 300467 DUST CONTROL, ROCK	6,519.80	
434	HAMM QUARR	HAMM QUARRIES	319387	91977 AP	04/28/2021	1-133-5-00-361	4-43 300467 DUST CONTROL, ROCK	1,694.08	
434	HAMM QUARR	HAMM QUARRIES	319387	91977 AP	04/28/2021	1-133-5-00-361	4-43 300467 DUST CONTROL, ROCK	2,306.00	
434	HAMM QUARR	HAMM QUARRIES	319387	91977 AP	04/28/2021	1-133-5-00-361	4-43 300467 DUST CONTROL, ROCK	230.02	
*** VENDOR								434 TOTAL	41,992.21
145	HIMPLE LUM	HIMPEL LUMBER	319390	91980 AP	04/28/2021	1-133-5-00-363	4-44 817 TREATED WOOD	1,125.63	
369	HOLLIDAY	HOLLIDAY SAND & GRAVEL CO	319391	91981 AP	04/28/2021	1-133-5-00-361	4-45 218331 ROCK	194.40	
191	HOME DEPOT	HOME DEPOT USA	319392	91982 AP	04/28/2021	1-133-5-00-312	4-51 1111680 BATTERIES	54.68	
368	INDEPENDEN	INDEPENDENT SALT CO	319393	91983 AP	04/28/2021	1-133-5-00-306	4-57 2KSLEAV ICE CONTROL SALT	31,724.59	
368	INDEPENDEN	INDEPENDENT SALT CO	319393	91983 AP	04/28/2021	1-133-5-00-306	4-57 2KSLEAV ICE CONTROL SALT	16,539.36	
*** VENDOR								368 TOTAL	48,263.95
19474	KANSAS COUNTRY STORE	KANSAS COUNTRY STORE	319396	91986 AP	04/28/2021	1-133-5-00-364	4-47 SAFETY BOOTS - J MCEVOY	126.00	
13336	KCHA	KANSAS COUNTY HIGHWAY ASSOCIAT	319398	91988 AP	04/28/2021	1-133-5-00-209	4-46 2021 NACE MEMBERSHIP - NO	550.00	
537	LEAV TIMES	LEAVENWORTH TIMES	319403	91993 AP	04/28/2021	1-133-5-00-208	4-48 ACCT 264 PUBLICATIONS	16.40	
537	LEAV TIMES	LEAVENWORTH TIMES	319403	91993 AP	04/28/2021	1-133-5-00-208	4-48 ACCT 264 PUBLICATIONS	14.85	
537	LEAV TIMES	LEAVENWORTH TIMES	319403	91993 AP	04/28/2021	1-133-5-00-208	4-48 ACCT 264 PUBLICATIONS	16.85	
537	LEAV TIMES	LEAVENWORTH TIMES	319403	91993 AP	04/28/2021	1-133-5-00-208	4-48 ACCT 264 PUBLICATIONS	16.85	
*** VENDOR								537 TOTAL	64.95
232	MHC KENWORTH	MHC KENWORTH-OLATHE	319407	91997 AP	04/28/2021	1-133-5-00-360	4-49 95988 T002156 - EQUIP PAR	332.18	
232	MHC KENWORTH	MHC KENWORTH-OLATHE	319407	91997 AP	04/28/2021	1-133-5-00-360	4-49 95988 T002156 - EQUIP PAR	49.94	
232	MHC KENWORTH	MHC KENWORTH-OLATHE	319407	91997 AP	04/28/2021	1-133-5-00-360	4-49 95988 T002156 - EQUIP PAR	259.74	
232	MHC KENWORTH	MHC KENWORTH-OLATHE	319407	91997 AP	04/28/2021	1-133-5-00-360	4-49 95988 T002156 - EQUIP PAR	57.06	
232	MHC KENWORTH	MHC KENWORTH-OLATHE	319407	91997 AP	04/28/2021	1-133-5-00-360	4-49 95988 T002156 - EQUIP PAR	48.97	
232	MHC KENWORTH	MHC KENWORTH-OLATHE	319407	91997 AP	04/28/2021	1-133-5-00-360	4-49 95988 T002156 - EQUIP PAR	59.36	
232	MHC KENWORTH	MHC KENWORTH-OLATHE	319407	91997 AP	04/28/2021	1-133-5-00-360	4-49 95988 T002156 - EQUIP PAR	475.70	
232	MHC KENWORTH	MHC KENWORTH-OLATHE	319407	91997 AP	04/28/2021	1-133-5-00-360	4-49 95988 T002156 - EQUIP PAR	138.42	
232	MHC KENWORTH	MHC KENWORTH-OLATHE	319407	91997 AP	04/28/2021	1-133-5-00-360	4-49 95988 T002156 - EQUIP PAR	57.06	
*** VENDOR								232 TOTAL	1,478.43
2666	MISC REIMBURSEMENTS	JESSE DOHLE	319409	91999 AP	04/28/2021	1-133-5-00-203	REIM LICENSE	36.00	
2666	MISC REIMBURSEMENTS	SCOTT HOELTING	319413	92003 AP	04/28/2021	1-133-5-00-203	4-56 REIMB FOR CDL TEST	13.75	
*** VENDOR								2666 TOTAL	49.75
1123	POMPMIDWEST	POMP'S TIRE SERVICE INC	319415	92005 AP	04/28/2021	1-133-5-00-309	4-50 1960724 TIRES/EQUIP PARTS	262.18	
1123	POMPMIDWEST	POMP'S TIRE SERVICE INC	319415	92005 AP	04/28/2021	1-133-5-00-309	4-50 1960724 TIRES/EQUIP PARTS	2,331.64	
1123	POMPMIDWEST	POMP'S TIRE SERVICE INC	319415	92005 AP	04/28/2021	1-133-5-00-360	4-50 1960724 TIRES/EQUIP PARTS	339.30	
*** VENDOR								1123 TOTAL	2,933.12
960	TODD'S TIRE LLC	TODD'S TIRE LLC	319423	92013 AP	04/28/2021	1-133-5-00-309	4-53 TIRES	155.00	
22972	TRANSFER STATION	TRANSFER STATION	319424	92014 AP	04/28/2021	1-133-5-00-214	4-52 ACCT 656 - CONSTRUCTION	109.00	
7512	UNITED ROT	UNITED ROTARY BRUSH CORP	319425	92015 AP	04/28/2021	1-133-5-00-360	4-54 112019 UNITED PRO STRIP B	3,021.32	
2007	WIRENUTS	WIRENUTS	319426	92016 AP	04/28/2021	1-133-5-00-207	4-55 MONTHLY MONITORING SHOP/N	179.70	



TYPES OF CHECKS SELECTED: \* ALL TYPES

		P.O.NUMBER	CHECK#					TOTAL FUND 133	130,969.02
648	COMMERCE BANK-COMMER	COMMERCE BANK-COMMERCIAL CARDS	319374	91963 AP	04/28/2021	1-136-5-00-204	COMM CORR COMMS,SUPPLIES,TRAIN	44.00	
648	COMMERCE BANK-COMMER	COMMERCE BANK-COMMERCIAL CARDS	319374	91963 AP	04/28/2021	1-136-5-00-204	COMM CORR COMMS,SUPPLIES,TRAIN	600.00	
648	COMMERCE BANK-COMMER	COMMERCE BANK-COMMERCIAL CARDS	319374	91963 AP	04/28/2021	1-136-5-00-232	COMM CORR COMMS,SUPPLIES,TRAIN	79.90	
648	COMMERCE BANK-COMMER	COMMERCE BANK-COMMERCIAL CARDS	319374	91963 AP	04/28/2021	1-136-5-00-234	COMM CORR COMMS,SUPPLIES,TRAIN	600.00	
648	COMMERCE BANK-COMMER	COMMERCE BANK-COMMERCIAL CARDS	319374	91963 AP	04/28/2021	1-136-5-00-234	COMM CORR COMMS,SUPPLIES,TRAIN	11.00	
648	COMMERCE BANK-COMMER	COMMERCE BANK-COMMERCIAL CARDS	319374	91963 AP	04/28/2021	1-136-5-00-301	COMM CORR COMMS,SUPPLIES,TRAIN	6.99	
*** VENDOR 648 TOTAL									1,341.89
2505	INTRINSIC INTERVENTI	INTRINSIC INTERVENTIONS	319395	91985 AP	04/28/2021	1-136-5-00-203	SMART SCREEN UA TEST CUPS	158.00	
2505	INTRINSIC INTERVENTI	INTRINSIC INTERVENTIONS	319395	91985 AP	04/28/2021	1-136-5-00-223	SMART SCREEN UA TEST CUPS	158.00	
*** VENDOR 2505 TOTAL									316.00
7098	QUILL CORP	QUILL CORP	319416	92006 AP	04/28/2021	1-136-5-00-222	5645204 COMM CORR OFFICE SUPPL	848.99	
7098	QUILL CORP	QUILL CORP	319416	92006 AP	04/28/2021	1-136-5-00-222	5645204 COMM CORR OFFICE SUPPL	848.99	
7098	QUILL CORP	QUILL CORP	319416	92006 AP	04/28/2021	1-136-5-00-222	5645204 COMM CORR OFFICE SUPPL	333.99	
7098	QUILL CORP	QUILL CORP	319416	92006 AP	04/28/2021	1-136-5-00-232	5645204 COMM CORR OFFICE SUPPL	848.99	
7098	QUILL CORP	QUILL CORP	319416	92006 AP	04/28/2021	1-136-5-00-232	5645204 COMM CORR OFFICE SUPPL	639.99	
7098	QUILL CORP	QUILL CORP	319416	92006 AP	04/28/2021	1-136-5-00-232	5645204 COMM CORR OFFICE SUPPL	639.99	
*** VENDOR 7098 TOTAL									4,160.94
TOTAL FUND 136									5,818.83
648	COMMERCE BANK-COMMER	COMMERCE BANK-COMMERCIAL CARDS	319374	91963 AP	04/28/2021	1-137-5-00-320	4-10 HOSES, GLASS FOR GRADER	630.88	
26523	GARY SERVAES ENTERPR	GARY SERVAES ENTERPRISES	319385	91974 AP	04/28/2021	1-137-5-00-312	4-11 MARCH ROCK	12,671.07	
434	HAMM QUARR	HAMM QUARRIES	319387	91977 AP	04/28/2021	1-137-5-00-312	4-12 300467 ROCK	2,919.33	
434	HAMM QUARR	HAMM QUARRIES	319387	91977 AP	04/28/2021	1-137-5-00-312	4-12 300467 ROCK	2,533.07	
434	HAMM QUARR	HAMM QUARRIES	319387	91977 AP	04/28/2021	1-137-5-00-312	4-12 300467 ROCK	1,438.78	
434	HAMM QUARR	HAMM QUARRIES	319387	91977 AP	04/28/2021	1-137-5-00-312	4-12 300467 ROCK	2,354.99	
434	HAMM QUARR	HAMM QUARRIES	319387	91977 AP	04/28/2021	1-137-5-00-312	4-12 300467 ROCK	2,261.70	
434	HAMM QUARR	HAMM QUARRIES	319387	91977 AP	04/28/2021	1-137-5-00-312	4-12 300467 ROCK	1,963.58	
434	HAMM QUARR	HAMM QUARRIES	319387	91977 AP	04/28/2021	1-137-5-00-312	4-12 300467 ROCK	1,207.80	
434	HAMM QUARR	HAMM QUARRIES	319387	91977 AP	04/28/2021	1-137-5-00-312	4-12 300467 ROCK	1,879.69	
434	HAMM QUARR	HAMM QUARRIES	319387	91977 AP	04/28/2021	1-137-5-00-312	4-12 300467 ROCK	454.64	
434	HAMM QUARR	HAMM QUARRIES	319387	91977 AP	04/28/2021	1-137-5-00-312	4-12 300467 ROCK	3,688.28	
434	HAMM QUARR	HAMM QUARRIES	319387	91977 AP	04/28/2021	1-137-5-00-312	4-12 300467 ROCK	249.58	
434	HAMM QUARR	HAMM QUARRIES	319387	91977 AP	04/28/2021	1-137-5-00-312	4-12 300467 ROCK	380.91	
434	HAMM QUARR	HAMM QUARRIES	319387	91977 AP	04/28/2021	1-137-5-00-312	4-12 300467 ROCK	971.50	
434	HAMM QUARR	HAMM QUARRIES	319387	91977 AP	04/28/2021	1-137-5-00-312	4-12 300467 ROCK	3,857.81	
434	HAMM QUARR	HAMM QUARRIES	319387	91977 AP	04/28/2021	1-137-5-00-312	4-12 300467 ROCK	2,033.84	
434	HAMM QUARR	HAMM QUARRIES	319387	91977 AP	04/28/2021	1-137-5-00-312	4-12 300467 ROCK	274.50	
434	HAMM QUARR	HAMM QUARRIES	319387	91977 AP	04/28/2021	1-137-5-00-312	4-13 300467 ROCK	1,713.09	
434	HAMM QUARR	HAMM QUARRIES	319387	91977 AP	04/28/2021	1-137-5-00-312	4-13 300467 ROCK	1,136.91	
434	HAMM QUARR	HAMM QUARRIES	319387	91977 AP	04/28/2021	1-137-5-00-312	4-13 300467 ROCK	943.75	
434	HAMM QUARR	HAMM QUARRIES	319387	91977 AP	04/28/2021	1-137-5-00-312	4-13 300467 ROCK	3,881.87	
434	HAMM QUARR	HAMM QUARRIES	319387	91977 AP	04/28/2021	1-137-5-00-312	4-13 300467 ROCK	2,273.09	
434	HAMM QUARR	HAMM QUARRIES	319387	91977 AP	04/28/2021	1-137-5-00-312	4-13 300467 ROCK	6,884.53	
434	HAMM QUARR	HAMM QUARRIES	319387	91977 AP	04/28/2021	1-137-5-00-312	4-13 300467 ROCK	856.00	
434	HAMM QUARR	HAMM QUARRIES	319387	91977 AP	04/28/2021	1-137-5-00-312	4-13 300467 ROCK	3,576.94	
434	HAMM QUARR	HAMM QUARRIES	319387	91977 AP	04/28/2021	1-137-5-00-312	4-13 300467 ROCK	735.57	
434	HAMM QUARR	HAMM QUARRIES	319387	91977 AP	04/28/2021	1-137-5-00-312	4-13 300467 ROCK	3,389.39	
434	HAMM QUARR	HAMM QUARRIES	319387	91977 AP	04/28/2021	1-137-5-00-312	4-13 300467 ROCK	1,050.24	
434	HAMM QUARR	HAMM QUARRIES	319387	91977 AP	04/28/2021	1-137-5-00-312	4-13 300467 ROCK	3,007.89	
434	HAMM QUARR	HAMM QUARRIES	319387	91977 AP	04/28/2021	1-137-5-00-312	4-13 300467 ROCK	3,456.67	

TYPES OF CHECKS SELECTED: \* ALL TYPES

			P.O.NUMBER	CHECK#						
434	HAMM QUARR	HAMM QUARRIES	319387	91977 AP	04/28/2021	1-137-5-00-312	4-13 300467 ROCK	1,754.88		
								*** VENDOR	434 TOTAL	63,130.82
27474	HEAVYQUIP	HEAVYQUIP	319389	91979 AP	04/28/2021	1-137-5-00-320	4-14 08473-C GRADER BLADES	1,200.00		
369	HOLLIDAY	HOLLIDAY SAND & GRAVEL CO	319391	91981 AP	04/28/2021	1-137-5-00-312	4-15 218331 ROCK	364.36		
369	HOLLIDAY	HOLLIDAY SAND & GRAVEL CO	319391	91981 AP	04/28/2021	1-137-5-00-312	4-15 218331 ROCK	630.85		
								*** VENDOR	369 TOTAL	995.21
1780	LEXECO	LEXECO	319404	91994 AP	04/28/2021	1-137-5-00-312	4-16 ASPHALT MILLINGS	166.45		
1780	LEXECO	LEXECO	319404	91994 AP	04/28/2021	1-137-5-00-312	4-16 ASPHALT MILLINGS	527.56		
								*** VENDOR	1780 TOTAL	694.01
1123	POMPMIDWEST	POMP'S TIRE SERVICE INC	319415	92005 AP	04/28/2021	1-137-5-00-321	4-187 1960724 POLAR MOLD TIRES	2,550.00		
								TOTAL FUND 137		81,871.99
-----										
648	COMMERCE BANK-COMMER	COMMERCE BANK-COMMERCIAL CARDS	319374	91963 AP	04/28/2021	1-138-5-00-204	COMM CORR COMMS,SUPPLIES,TRAIN	112.00		
648	COMMERCE BANK-COMMER	COMMERCE BANK-COMMERCIAL CARDS	319374	91963 AP	04/28/2021	1-138-5-00-301	COMM CORR COMMS,SUPPLIES,TRAIN	221.68		
								*** VENDOR	648 TOTAL	333.68
								TOTAL FUND 138		333.68
-----										
648	COMMERCE BANK-COMMER	COMMERCE BANK-COMMERCIAL CARDS	319374	91963 AP	04/28/2021	1-144-5-00-2	COA-PALS PET FOOD, VET BILLS	375.96		
648	COMMERCE BANK-COMMER	COMMERCE BANK-COMMERCIAL CARDS	319374	91963 AP	04/28/2021	1-144-5-00-2	COA-PALS PET FOOD, VET BILLS	229.50		
648	COMMERCE BANK-COMMER	COMMERCE BANK-COMMERCIAL CARDS	319374	91963 AP	04/28/2021	1-144-5-00-2	COA-PALS PET FOOD, VET BILLS	219.24		
								*** VENDOR	648 TOTAL	824.70
								TOTAL FUND 144		824.70
-----										
648	COMMERCE BANK-COMMER	COMMERCE BANK-COMMERCIAL CARDS	319374	91963 AP	04/28/2021	1-145-5-00-204	CO ON AGING:SUBS,VOL REC,POSTA	24.99		
648	COMMERCE BANK-COMMER	COMMERCE BANK-COMMERCIAL CARDS	319374	91963 AP	04/28/2021	1-145-5-00-208	CO ON AGING:SUBS,VOL REC,POSTA	141.04		
648	COMMERCE BANK-COMMER	COMMERCE BANK-COMMERCIAL CARDS	319374	91963 AP	04/28/2021	1-145-5-00-209	CO ON AGING:SUBS,VOL REC,POSTA	450.00		
648	COMMERCE BANK-COMMER	COMMERCE BANK-COMMERCIAL CARDS	319374	91963 AP	04/28/2021	1-145-5-00-210	CO ON AGING:SUBS,VOL REC,POSTA	220.00		
648	COMMERCE BANK-COMMER	COMMERCE BANK-COMMERCIAL CARDS	319374	91963 AP	04/28/2021	1-145-5-00-213	CO ON AGING:SUBS,VOL REC,POSTA	47.47		
648	COMMERCE BANK-COMMER	COMMERCE BANK-COMMERCIAL CARDS	319374	91963 AP	04/28/2021	1-145-5-00-252	CO ON AGING:SUBS,VOL REC,POSTA	13.22		
648	COMMERCE BANK-COMMER	COMMERCE BANK-COMMERCIAL CARDS	319374	91963 AP	04/28/2021	1-145-5-00-253	CO ON AGING:SUBS,VOL REC,POSTA	9.70		
648	COMMERCE BANK-COMMER	COMMERCE BANK-COMMERCIAL CARDS	319374	91963 AP	04/28/2021	1-145-5-00-253	CO ON AGING:SUBS,VOL REC,POSTA	160.00		
648	COMMERCE BANK-COMMER	COMMERCE BANK-COMMERCIAL CARDS	319374	91963 AP	04/28/2021	1-145-5-00-253	CO ON AGING:SUBS,VOL REC,POSTA	214.85		
648	COMMERCE BANK-COMMER	COMMERCE BANK-COMMERCIAL CARDS	319374	91963 AP	04/28/2021	1-145-5-00-253	CO ON AGING:SUBS,VOL REC,POSTA	169.68		
648	COMMERCE BANK-COMMER	COMMERCE BANK-COMMERCIAL CARDS	319374	91963 AP	04/28/2021	1-145-5-00-254	CO ON AGING:SUBS,VOL REC,POSTA	76.94		
648	COMMERCE BANK-COMMER	COMMERCE BANK-COMMERCIAL CARDS	319374	91963 AP	04/28/2021	1-145-5-00-254	CO ON AGING:SUBS,VOL REC,POSTA	44.57		
648	COMMERCE BANK-COMMER	COMMERCE BANK-COMMERCIAL CARDS	319374	91963 AP	04/28/2021	1-145-5-00-255	CO ON AGING:SUBS,VOL REC,POSTA	28.52		
648	COMMERCE BANK-COMMER	COMMERCE BANK-COMMERCIAL CARDS	319374	91963 AP	04/28/2021	1-145-5-00-302	CO ON AGING:SUBS,VOL REC,POSTA	110.00		
648	COMMERCE BANK-COMMER	COMMERCE BANK-COMMERCIAL CARDS	319374	91963 AP	04/28/2021	1-145-5-00-305	CO ON AGING:SUBS,VOL REC,POSTA	128.34		
648	COMMERCE BANK-COMMER	COMMERCE BANK-COMMERCIAL CARDS	319374	91963 AP	04/28/2021	1-145-5-00-345	C1&C2 COMMODITIES (MEALS)	28.43		
648	COMMERCE BANK-COMMER	COMMERCE BANK-COMMERCIAL CARDS	319374	91963 AP	04/28/2021	1-145-5-00-345	C1&C2 COMMODITIES (MEALS)	96.72		
648	COMMERCE BANK-COMMER	COMMERCE BANK-COMMERCIAL CARDS	319374	91963 AP	04/28/2021	1-145-5-05-301	C1&C2 COMMODITIES (MEALS)	11.88		
648	COMMERCE BANK-COMMER	COMMERCE BANK-COMMERCIAL CARDS	319374	91963 AP	04/28/2021	1-145-5-06-301	C1&C2 COMMODITIES (MEALS)	12.73		
648	COMMERCE BANK-COMMER	COMMERCE BANK-COMMERCIAL CARDS	319374	91963 AP	04/28/2021	1-145-5-06-321	C1&C2 COMMODITIES (MEALS)	8.91		
648	COMMERCE BANK-COMMER	COMMERCE BANK-COMMERCIAL CARDS	319374	91963 AP	04/28/2021	1-145-5-07-302	C1&C2 COMMODITIES (MEALS)	2.12		
648	COMMERCE BANK-COMMER	COMMERCE BANK-COMMERCIAL CARDS	319374	91963 AP	04/28/2021	1-145-5-07-321	C1&C2 COMMODITIES (MEALS)	8.91		
								*** VENDOR	648 TOTAL	2,009.02
86	EVERGY	EVERGY KANSAS CENTRAL INC	319379	91968 AP	04/28/2021	1-145-5-00-246	ELEC SVC COUNCIL ON AGING	706.73		
4755	LEAV PAPER	LEAVENWORTH PAPER AND OFFICE S	319402	91992 AP	04/28/2021	1-145-5-00-255	CO ON AGING - MASKS, JANITORIA	204.04		
4755	LEAV PAPER	LEAVENWORTH PAPER AND OFFICE S	319402	91992 AP	04/28/2021	1-145-5-00-301	CO ON AGING - MASKS, JANITORIA	25.00		
4755	LEAV PAPER	LEAVENWORTH PAPER AND OFFICE S	319402	91992 AP	04/28/2021	1-145-5-00-301	CO ON AGING - MASKS, JANITORIA	45.84		
								*** VENDOR	4755 TOTAL	274.88
2666	MISC REIMBURSEMENTS	CAMALLA LEONHARD	319412	92002 AP	04/28/2021	1-145-5-00-301	REIM OFFICE SUPPLIES	4.84		

TYPES OF CHECKS SELECTED: \* ALL TYPES

		P.O.NUMBER	CHECK#					TOTAL FUND 145	2,995.47
648	COMMERCE BANK-COMMER	COMMERCE BANK-COMMER	COMMERCE BANK-COMMERCIAL CARDS	319374	91963 AP	04/28/2021	1-146-5-00-301	CO TREAS-CHAIR, OFFICE SUPPLIE	109.99
648	COMMERCE BANK-COMMER	COMMERCE BANK-COMMER	COMMERCE BANK-COMMERCIAL CARDS	319374	91963 AP	04/28/2021	1-146-5-00-301	CO TREAS-CHAIR, OFFICE SUPPLIE	209.95
648	COMMERCE BANK-COMMER	COMMERCE BANK-COMMER	COMMERCE BANK-COMMERCIAL CARDS	319374	91963 AP	04/28/2021	1-146-5-00-301	CO TREAS-CHAIR, OFFICE SUPPLIE	5.99
648	COMMERCE BANK-COMMER	COMMERCE BANK-COMMER	COMMERCE BANK-COMMERCIAL CARDS	319374	91963 AP	04/28/2021	1-146-5-00-301	CO TREAS-CHAIR, OFFICE SUPPLIE	93.59
648	COMMERCE BANK-COMMER	COMMERCE BANK-COMMER	COMMERCE BANK-COMMERCIAL CARDS	319374	91963 AP	04/28/2021	1-146-5-00-301	CO TREAS-CHAIR, OFFICE SUPPLIE	84.99
648	COMMERCE BANK-COMMER	COMMERCE BANK-COMMER	COMMERCE BANK-COMMERCIAL CARDS	319374	91963 AP	04/28/2021	1-146-5-00-301	CO TREAS-CHAIR, OFFICE SUPPLIE	278.79
648	COMMERCE BANK-COMMER	COMMERCE BANK-COMMER	COMMERCE BANK-COMMERCIAL CARDS	319374	91963 AP	04/28/2021	1-146-5-00-301	CO TREAS-CHAIR, OFFICE SUPPLIE	14.99
648	COMMERCE BANK-COMMER	COMMERCE BANK-COMMER	COMMERCE BANK-COMMERCIAL CARDS	319374	91963 AP	04/28/2021	1-146-5-00-301	CO TREAS-CHAIR, OFFICE SUPPLIE	34.99
648	COMMERCE BANK-COMMER	COMMERCE BANK-COMMER	COMMERCE BANK-COMMERCIAL CARDS	319374	91963 AP	04/28/2021	1-146-5-00-301	CO TREAS-CHAIR, OFFICE SUPPLIE	468.99
648	COMMERCE BANK-COMMER	COMMERCE BANK-COMMER	COMMERCE BANK-COMMERCIAL CARDS	319374	91963 AP	04/28/2021	1-146-5-00-301	CO TREAS-CHAIR, OFFICE SUPPLIE	91.98
648	COMMERCE BANK-COMMER	COMMERCE BANK-COMMER	COMMERCE BANK-COMMERCIAL CARDS	319374	91963 AP	04/28/2021	1-146-5-00-301	CO TREAS-CHAIR, OFFICE SUPPLIE	53.74
648	COMMERCE BANK-COMMER	COMMERCE BANK-COMMER	COMMERCE BANK-COMMERCIAL CARDS	319374	91963 AP	04/28/2021	1-146-5-00-301	CO TREAS-CHAIR, OFFICE SUPPLIE	174.85
648	COMMERCE BANK-COMMER	COMMERCE BANK-COMMER	COMMERCE BANK-COMMERCIAL CARDS	319374	91963 AP	04/28/2021	1-146-5-00-301	CO TREAS-CHAIR, OFFICE SUPPLIE	460.55
648	COMMERCE BANK-COMMER	COMMERCE BANK-COMMER	COMMERCE BANK-COMMERCIAL CARDS	319374	91963 AP	04/28/2021	1-146-5-00-301	CO TREAS-CHAIR, OFFICE SUPPLIE	109.53
648	COMMERCE BANK-COMMER	COMMERCE BANK-COMMER	COMMERCE BANK-COMMERCIAL CARDS	319374	91963 AP	04/28/2021	1-146-5-00-301	CO TREAS-CHAIR, OFFICE SUPPLIE	11.98
648	COMMERCE BANK-COMMER	COMMERCE BANK-COMMER	COMMERCE BANK-COMMERCIAL CARDS	319374	91963 AP	04/28/2021	1-146-5-00-301	CO TREAS-CHAIR, OFFICE SUPPLIE	52.52
648	COMMERCE BANK-COMMER	COMMERCE BANK-COMMER	COMMERCE BANK-COMMERCIAL CARDS	319374	91963 AP	04/28/2021	1-146-5-00-301	CO TREAS-CHAIR, OFFICE SUPPLIE	118.32
								*** VENDOR 648 TOTAL	2,375.74
								TOTAL FUND 146	2,375.74
7158	A-1 RENTAL	A-1 RENTAL		319361	91945 AP	04/28/2021	1-160-5-00-263	4-33 MONTHLY TOILET RENTAL	100.00
648	COMMERCE BANK-COMMER	COMMERCE BANK-COMMER	COMMERCE BANK-COMMERCIAL CARDS	319374	91963 AP	04/28/2021	1-160-5-00-208	HHW SUPPLIES/DISPOSAL,PPE,CONT	249.35
648	COMMERCE BANK-COMMER	COMMERCE BANK-COMMER	COMMERCE BANK-COMMERCIAL CARDS	319374	91963 AP	04/28/2021	1-160-5-00-213	JIM - TRANSFER STATION MAINT	509.68
648	COMMERCE BANK-COMMER	COMMERCE BANK-COMMER	COMMERCE BANK-COMMERCIAL CARDS	319374	91963 AP	04/28/2021	1-160-5-00-263	HHW SUPPLIES/DISPOSAL,PPE,CONT	27.03
648	COMMERCE BANK-COMMER	COMMERCE BANK-COMMER	COMMERCE BANK-COMMERCIAL CARDS	319374	91963 AP	04/28/2021	1-160-5-00-303	HHW SUPPLIES/DISPOSAL,PPE,CONT	150.00
648	COMMERCE BANK-COMMER	COMMERCE BANK-COMMER	COMMERCE BANK-COMMERCIAL CARDS	319374	91963 AP	04/28/2021	1-160-5-00-303	HHW SUPPLIES/DISPOSAL,PPE,CONT	48.40
648	COMMERCE BANK-COMMER	COMMERCE BANK-COMMER	COMMERCE BANK-COMMERCIAL CARDS	319374	91963 AP	04/28/2021	1-160-5-00-305	HHW SUPPLIES/DISPOSAL,PPE,CONT	16.33
								*** VENDOR 648 TOTAL	1,000.79
								TOTAL FUND 160	1,100.79
6636	KANSAS GAS	KANSAS GAS SERVICE		319397	91987 AP	04/28/2021	1-174-5-00-210	510614745 2007004 82 GAS SVC	58.92
								TOTAL FUND 174	58.92
648	COMMERCE BANK-COMMER	COMMERCE BANK-COMMER	COMMERCE BANK-COMMERCIAL CARDS	319374	91963 AP	04/28/2021	1-195-5-00-302	502 BLDG PAINT, FIXTURES,CONDU	245.01
648	COMMERCE BANK-COMMER	COMMERCE BANK-COMMER	COMMERCE BANK-COMMERCIAL CARDS	319374	91963 AP	04/28/2021	1-195-5-00-302	502 BLDG PAINT, FIXTURES,CONDU	119.98
648	COMMERCE BANK-COMMER	COMMERCE BANK-COMMER	COMMERCE BANK-COMMERCIAL CARDS	319374	91963 AP	04/28/2021	1-195-5-00-302	502 BLDG PAINT, FIXTURES,CONDU	21.26
648	COMMERCE BANK-COMMER	COMMERCE BANK-COMMER	COMMERCE BANK-COMMERCIAL CARDS	319374	91963 AP	04/28/2021	1-195-5-00-302	502 BLDG PAINT, FIXTURES,CONDU	29.22
								*** VENDOR 648 TOTAL	372.95
86	EVERGY	EVERGY KANSAS CENTRAL INC		319379	91968 AP	04/28/2021	1-195-5-00-290	ELEC SVC JDC	245.20
								TOTAL FUND 195	618.15
648	COMMERCE BANK-COMMER	COMMERCE BANK-COMMER	COMMERCE BANK-COMMERCIAL CARDS	319374	91963 AP	04/28/2021	1-198-5-16-200	EMS:LUNHC FOR VACCINE CLINIC S	140.96
648	COMMERCE BANK-COMMER	COMMERCE BANK-COMMER	COMMERCE BANK-COMMERCIAL CARDS	319374	91963 AP	04/28/2021	1-198-5-16-200	EMS:LUNHC FOR VACCINE CLINIC S	18.00
								*** VENDOR 648 TOTAL	158.96
								TOTAL FUND 198	158.96
16096	SCHUETZ CONST	SCHUETZ CONSTRUCTION LLC		319418	92008 AP	04/28/2021	1-210-5-00-2	REPAIR 4" SEWER MAIN METRO LIF	812.33
								TOTAL FUND 210	812.33
648	COMMERCE BANK-COMMER	COMMERCE BANK-COMMER	COMMERCE BANK-COMMERCIAL CARDS	319374	91963 AP	04/28/2021	1-212-5-00-2	JCI INDUSTRIES - MOTOR (SD#2)	2,710.00

warrants by vendor

TYPES OF CHECKS SELECTED: \* ALL TYPES

		P.O.NUMBER	CHECK#					TOTAL FUND 212	2,710.00
2570	BOND ESCROW REFUND	RICHARD CHRISTIAN	319366	91950 AP	04/28/2021	1-503-5-00-2	REF ENTRANCE PERMIT SEVEN SIST	100.00	
2570	BOND ESCROW REFUND	PCDI	319367	91951 AP	04/28/2021	1-503-5-00-2	REF ENTRANCE PERMIT LEXI LANE	100.00	
2570	BOND ESCROW REFUND	NICK AND KIM EDWARDS	319368	91952 AP	04/28/2021	1-503-5-00-2	4-3 REFUND ENTRANCE PERMIT 21	100.00	
								*** VENDOR 2570 TOTAL	300.00
								TOTAL FUND 503	300.00
1402	BCBSKS	BLUE CROSS BLUE SHIELD OF KANS	319363	91947 AP	04/28/2021	1-510-2-00-940	09426 - APRIL PREMIUMS	292,306.42	
1402	BCBSKS	BLUE CROSS BLUE SHIELD OF KANS	319363	91947 AP	04/28/2021	1-510-2-00-940	09426 - APRIL PREMIUMS	4,568.23-	
								*** VENDOR 1402 TOTAL	287,738.19
1504	DELTA DENTAL OF KS	DELTA DENTAL OF KANSAS	319375	91964 AP	04/28/2021	1-510-2-00-942	51269-00001 APRIL DENTAL PREMI	17,361.26	
1504	DELTA DENTAL OF KS	DELTA DENTAL OF KANSAS	319375	91964 AP	04/28/2021	1-510-2-00-942	51269-00001 APRIL DENTAL PREMI	273.77	
1504	DELTA DENTAL OF KS	DELTA DENTAL OF KANSAS	319375	91964 AP	04/28/2021	1-510-2-00-942	51269-00001 APRIL DENTAL PREMI	1,681.82	
								*** VENDOR 1504 TOTAL	19,316.85
268	LIFELOCK	NORTONLIFELOCK INC	319405	91995 AP	04/28/2021	1-510-2-00-941	1247233 APRIL PREMIUMS	1,513.62	
8500	METLIFE	METLIFE (VISION PLAN)	319406	91996 AP	04/28/2021	1-510-2-00-944	5919453 APRIL PREMIUMS	3,936.55	
8500	METLIFE	METLIFE (VISION PLAN)	319406	91996 AP	04/28/2021	1-510-2-00-944	5919453 APRIL PREMIUMS	28.88-	
								*** VENDOR 8500 TOTAL	3,907.67
1485	RELIANCE STANDARD	RELIANCE STANDARD	319417	92007 AP	04/28/2021	1-510-2-00-962	APRIL GROUP/VOL LIFE INSURANCE	1,686.30	
1485	RELIANCE STANDARD	RELIANCE STANDARD	319417	92007 AP	04/28/2021	1-510-2-00-965	APRIL GROUP/VOL LIFE INSURANCE	2,705.59	
								*** VENDOR 1485 TOTAL	4,391.89
								TOTAL FUND 510	316,868.22
								TOTAL ALL CHECKS	794,328.15

TYPES OF CHECKS SELECTED: \* ALL TYPES

FUND SUMMARY

001	GENERAL	197,327.19
108	COUNTY HEALTH	11,869.79
115	EQUIPMENT RESERVE	10,292.63
119	ROD TECHNOLOGY	26,440.75
126	COMM CORR ADULT	580.99
133	ROAD & BRIDGE	130,969.02
136	COMM CORR JUVENILE	5,818.83
137	LOCAL SERVICE ROAD & BRIDGE	81,871.99
138	JUV INTAKE & ASSESSMENT	333.68
144	PALS (PETS AND LOVING SENIORS	824.70
145	COUNCIL ON AGING	2,995.47
146	COUNTY TREASURER SPECIAL	2,375.74
160	SOLID WASTE MANAGEMENT	1,100.79
174	911	58.92
195	JUVENILE DETENTION	618.15
198	SPECIAL GRANTS	158.96
210	SEWER DISTRICT 1: HIGH CREST	812.33
212	SEWER DISTRICT 2: TIMBERLAKES	2,710.00
503	ROAD & BRIDGE BOND ESCROW	300.00
510	PAYROLL CLEARING	316,868.22
	TOTAL ALL FUNDS	794,328.15

**Consent Agenda 5/5/2021**  
**Checks dated 4/24/21 - 4/28/21**

---

---

**Leavenworth County  
Request for Board Action  
Resolution 2021-12  
Special Use Permit Polhemus Mechanic**

**Date: May 5, 2021**

**To: Board of County Commissioners**

**From: Planning & Zoning Staff**

**Department Head Review: Krystal Voth, Reviewed**

**Additional Reviews as needed:**

**Budget Review  Administrator Review  Legal Review**

---

---

**Action Requested:** Approve Resolution 2021-12, a request for a Special Use Permit for Polhemus Mechanic.

**Analysis:** The applicant is requesting a Special Use Permit (SUP) for a mechanic shop to repair heavy equipment.

The applicant is currently utilizing an existing structure to repair semi-trucks and grain trailers. The applicant estimates an average of two (2) customer trips per week. The applicant repairs large vehicles, including semi-trucks, agricultural equipment, and grain trailers. The vehicles and trailers that the applicant works on each weigh over 10,000 lbs., with semi-trucks weighing 16,000 – 17,000 lbs. These vehicles access the property via Gatewood Street, an unpaved, neighborhood street. The applicant is requesting a 7 AM to 7 PM time frame for the hours of operation on the property.

The structure currently utilized for the repairs of vehicles is a dirt floor barn. The applicant says any soil which is contaminated through fluid leaks or chemical spills will be removed and properly disposed of with a spill kit.

Public Works recommends that all traffic to the business be routed only from K92 to 175<sup>th</sup> Street to Gatewood Street in order to limit traffic on routes not designed for heavy vehicles. Kansas Department of Transportation has provided no further comment to a required route for traffic.

Staff has the following concerns regarding the business:

1. The property is located within the Hidden Meadows Subdivision and this subdivision and the surrounding area is planned to be developed with mixed residential uses by the Future Land Use map.
2. The usage of the property as a mechanic's shop for large vehicles does not fit the land usages found in this neighborhood.
3. The property is accessed via an unpaved road. Planning and Zoning is concerned by the level of traffic and size of vehicles which this business would wear the road more quickly than anticipated and require unscheduled county maintenance.
4. Neighbors are likely to be affected by the nuisance of large vehicles approaching the property as customers drop off their vehicles or trailers on-site.
5. The barn structure used for the repairs has a dirt floor that provides little protection or ways to mitigate the effects of the chemical or fluid spills.

Staff recommends denial of this application. The Planning Commission directed Staff to prepare conditions for approval. Staff presented those conditions at the April 14 Planning Commission and the Commission recommended approval subject to the conditions.

**Planning Commission Recommendation:** The Planning Commission voted 8-0 (1 absent) to recommend approval of Case No. DEV-20-158 (Resolution 2021-12) for a Special Use Permit for Polhemus.

**Alternatives:**

1. Approve Resolution 2021-12, Special Use Permit for Polhemus Mechanic Shop an Automotive Repair Business, with Findings of Fact, and with or without conditions; or
2. Deny Resolution 2021-12, Special Use Permit for Polhemus Mechanic Shop an Automotive Repair Business, with Findings of Fact; or
3. Revise or Modify the Planning Commission Recommendation to Resolution 2021-12, Special Use Permit for Polhemus Mechanic Shop an Automotive Repair Business, with Findings of Fact; or
4. Remand the case back to the Planning Commission.

**Budgetary Impact:**

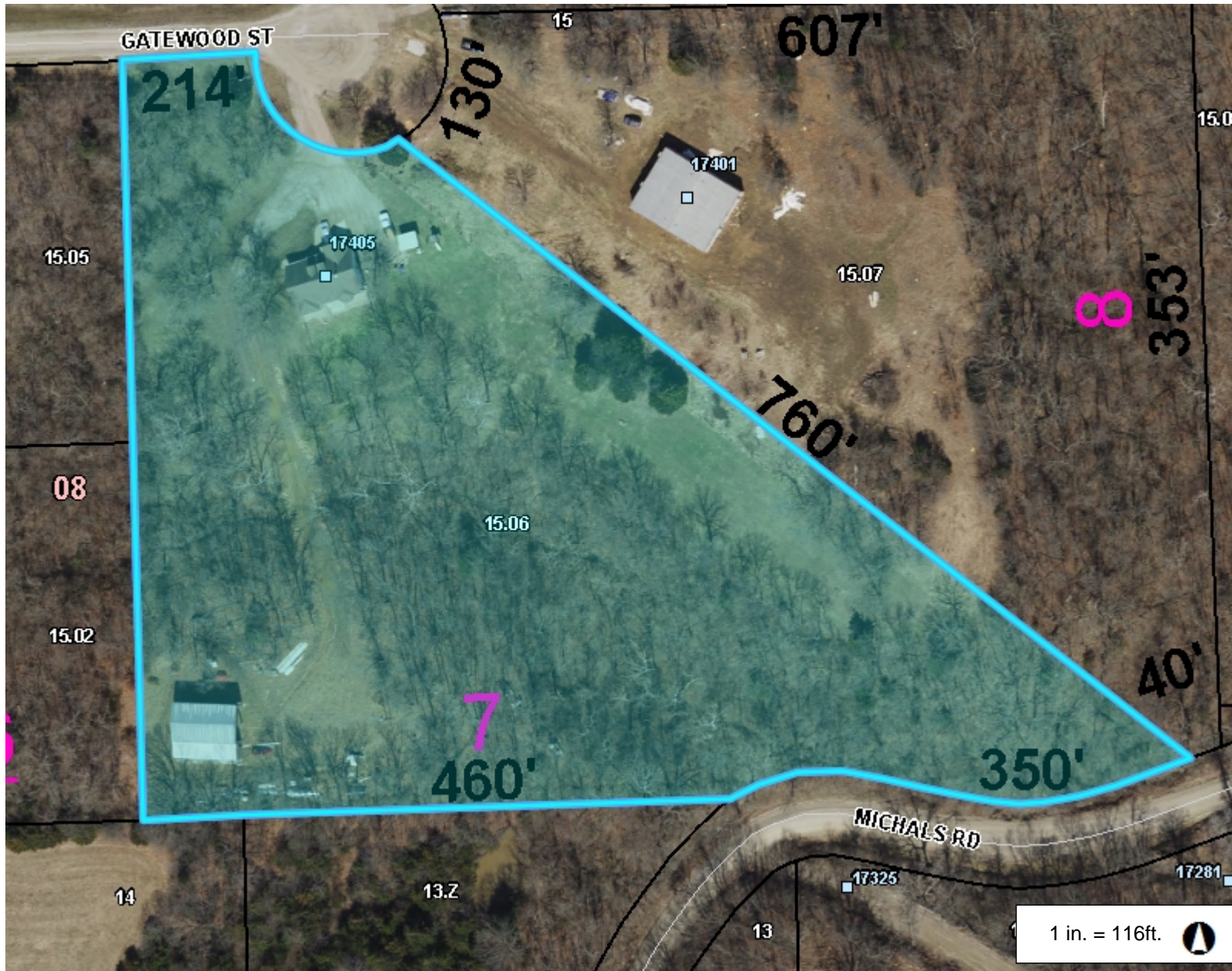
- X Not Applicable
- Budgeted item with available funds
- Non-Budgeted item with available funds through prioritization
- Non-Budgeted item with additional funds requested

**Total Amount Requested:**

\$0.00

**Additional Attachments:** Staff Report, Planning Commission Minutes

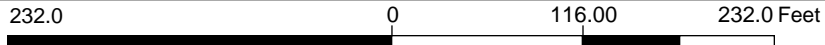
# DEV-20-158 SUP Pohlemus



### Legend

- Address Point
- Parcel Number
- Lot Line
- Parcel
- ⋮ City Limit Line
- Major Road
- <all other values>
- 70
- Road
- + Railroad
- Section
- Section Boundaries
- County Boundary

1 in. = 116ft.



This Cadastral Map is for informational purposes only. It does not purport to represent a property boundary survey of the parcels shown and shall not be used for conveyances or the establishment of property boundaries.

THIS MAP IS NOT TO BE USED FOR NAVIGATION

### Notes



**Resolution 2021-12**  
**Case No. DEV-20-158**  
**Polhemus Mechanic Shop**  
Special Use Permit – Automotive Repair

Staff Report – Board of County Commissioners

May 5, 2021

**GENERAL INFORMATION:**

**Applicant/  
Property Owner:** Aiden Polhemus  
17405 Gatewood Street  
Leavenworth, KS, 66048

**Legal Description:** A tract of land in the Northeast Quarter of Section 8, Township 9 South, Range 22 East of the 6<sup>th</sup> P.M, in Leavenworth County, Kansas.

**Parcel Size:** ± 6.5 acres

**Zoning/Land Use:** RR-2.5, Rural Residential 2.5-acre minimum size parcels

**Comprehensive Plan:** This parcel is within the Mixed Residential land use category.

**Parcel ID No.:** 103-08-0-00-00-015.06

**Planner:** Krystal Voth

---

**REPORT:**

**Request**

At the March 10 Planning Commission, the Planning Commission directed Staff to provide a list of conditions for approval. Staff offers the following conditions:

1. The SUP shall be limited to a period of five (5) years.
2. The business shall be limited to the hours of 7:00 AM until 7:00 PM Monday-Saturday.
3. The SUP shall be limited to two full-time employees and one part-time employee.
4. The applicant shall update the site plan to indicate a designated parking area. The parking area shall be sized for not more than five (5) vehicles. All vehicles shall be either contained within the shop or on the designated parking area.
5. There shall be no storage of parts or junk vehicles outside.
6. There shall be no more than six (6) vehicles stored at the site overnight.
7. The building shall be completed, including the floor, prior to business operations.
8. Noise levels at the property line shall not exceed 60 decibels.
9. There shall be no unregistered vehicles at the property.
10. All floor drains connected to the septic system shall be capped or plugged. Other drains shall collect all automotive fluids for proper disposal.
11. There shall be no on-site retail sales.
12. No signage is allowed in the right-of-way. No signage is requested with the SUP. All signage shall comply with Article 25, Sign Regulations of the Leavenworth County Zoning and Subdivision Regulations.

13. No on-street parking shall be allowed.
14. This SUP shall be limited to the Narrative dated December 22, 2020 submitted with this application.
15. This SUP shall comply with all local, state, and federal rules and regulations that may be applicable. After approval of this SUP by the Board of County Commission all conditions listed shall be adhered to and copies shall be provided to the Planning and Zoning Department within 30 days.

**Request**

The applicant is requesting a Special Use Permit for a vehicle service station and repair shop.

**Adjacent Land Use**

The surrounding properties are residences and farms on varying sized parcels ranging from 2.5 acres to over 80 acres in size.

**Flood Plain**

There are no Special Flood Hazard Areas on this parcel per FEMA Firm Map 20103C0150G July 16, 2015.

**Utilities/Services**

Sewer: Private septic system  
Fire: Fire District #1  
Water: RWD #5  
Electric: FreeState Cooperative

**Access/Streets**

The property is accessed by Gatewood Street, a County local road with a gravel surface ± 22' wide.

**Agency Comments**

See attached comments – Memo – Mitch Pleak – Public Works, February 9, 2020

**Factors to be considered**

The following factors are to be considered by the Planning Commission and the Board of County Commission when approving or disapproving this Special Use Permit request:

1. Character of the neighborhood: The character of the neighborhood is rural; primarily rural residences, and agricultural uses.
2. Zoning and uses of nearby property: The surrounding properties are zoned RR-5, Rural Residential 5-acre minimum size parcels. The uses are rural residences and agricultural.
3. Suitability of the property for the uses to which it has been restricted: The property is within an area suited for rural residences and agricultural use. The use is allowed with approval of a Special Use Permit.
4. Extent to which removal of the restrictions will detrimentally affect nearby property: The area is likely be detrimentally affected by use of the road by heavy vehicles, site pollution from the shop, and increased traffic and noise pollution.
5. Length of time the property has been vacant as zoned: The property is not vacant.
6. Relative gain to economic development, public health, safety and welfare: The proposed use will provide income for the applicant.
7. Conformance to the Comprehensive Plan: The Future Land Use Map indicates this area as an area of mixed residential development.
8. Staff recommendation is for the denial of Special Use Permit application.

**Staff Analysis**

<b><u>LOCATION</u></b>	
<b>Adjacent Residences</b>	Adjacent residences are rural-suburban uses. Most properties to the north and west are on 2.5 acre parcels, or larger. Parcels to the east and south are on 10 acre parcels or larger.
<b>Adjacent Zoning/Uses</b>	Zoning in the area is RR-2.5 and are used primarily as rural residences and agricultural uses.
<b>Density</b>	The area is not densely populated.
<b>Nearby City Limits</b>	The city of Leavenworth is approximately 8/10 of a mile to the east of the property.
<b>Initial Growth Management Area</b>	The property is not located within any city's Urban Growth Management Area.

<b><u>IMPACT</u></b>	
<b>Noise Pollution</b>	This use will not cause prolonged noise pollution. The primary times of elevated noise levels will be when the applicant or customers are delivering the vehicles. This may happen at anytime during the day, based on applicant's schedule.
<b>Traffic</b>	The use will create additional traffic along 175 <sup>th</sup> Street and Gatewood Streets. The traffic will consist of semi-trucks weighing 16,000-17,000 lbs. and grain trailers weighing 10,000 lbs.
<b>Lighting</b>	The applicant does not have lighting other than security lighting and is not requesting lighting.
<b>Outdoor Storage</b>	The applicant states that equipment and related vehicles are stored outside until he is able to repair the machinery.
<b>Parking</b>	Parking is sufficient as only the applicant and his wife are the reported employees.
<b>Visitors/Employees</b>	The applicant estimates a total of two (2) visits from customers to the property each week.
<b>Waste</b>	The business generates chemical, fluid, and mechanical waste consistent with vehicle repair facilities. This waste is properly disposed of according to KDHE standards.

<b>SITE COMPATABILITY</b>	
<b>Size of Parcel</b>	The parcel is 6.5 acres in size.
<b>Zoning of Parcel</b>	The parcel is zoned Rural Residential-5
<b>Buildings (Existing &amp; Proposed)</b>	The applicant has a shop on the property that is approximately 40 x 50 feet. Tools, equipment, and vehicles in process of being repaired by the business are stored in the shop and around the shop.
<b>Setbacks</b>	Existing building meet the required setbacks.
<b>Screening</b>	The property is bordered on the east, south, and west by wooded land. The shop is screened from via on Gatewood Street.

**Complaints**

The Planning and Zoning Department has received no formal complaints on the property.

**Staff Comments**

The applicant is requesting a Special Use Permit (SUP) for a mechanic shop to repair heavy equipment.

The applicant is currently utilizing an existing structure to repair semi-trucks and grain trailers. The applicant estimates an average of two (2) customer trips per week. The applicant repairs large vehicles, including semi-trucks, agricultural equipment, and grain trailers. The vehicles and trailers that the applicant works on each weigh over 10,000 lbs., with semi-trucks weighing 16,000 – 17,000 lbs. These vehicles access the property via Gatewood Street, an unpaved, neighborhood street. The applicant is requesting a 7 AM to 7 PM time frame for the hours of operation on the property.

The structure currently utilized for the repairs of vehicles is a dirt floor barn. The applicant says any soil which is contaminated through fluid leaks or chemical spills will be removed and properly disposed of with a spill kit.

Public Works recommends that all traffic to the business be routed only from K92 to 175<sup>th</sup> Street to Gatewood Street in order to limit traffic on routes not designed for heavy vehicles. Kansas Department of Transportation has provided no further comment to a required route for traffic.

Staff has the following concerns regarding the business:

1. The property is located within the Hidden Meadows Subdivision and this subdivision and the surrounding area is planned to be developed with mixed residential uses by the Future Land Use map.
2. The usage of the property as a mechanic’s shop for large vehicles does not fit the land usages found in this neighborhood.
3. The property is accessed via an unpaved road. Planning and Zoning is concerned by the level of traffic and size of vehicles which this business would wear the road more quickly than anticipated and require unscheduled county maintenance.
4. Neighbors are likely to be affected by the nuisance of large vehicles approaching the property as customers drop off their vehicles or trailers on-site.
5. The barn structure used for the repairs has a dirt floor that provides little protection or ways to mitigate the effects of the chemical or fluid spills.

Staff recommends denial of this application.

---

**STAFF RECOMMENDATION:**

The staff recommends denial of Case No. DEV-20-158, Special Use Permit for Polhemus Mechanic Shop.

---

---

**ACTION OPTIONS:**

1. Approve Resolution 2021-12, Special Use Permit for Polhemus Mechanic Shop and Automotive Repair Business, with Findings of Fact, and with or without conditions; or
2. Deny Resolution 2021-12, Special Use Permit for Polhemus Mechanic Shop and Automotive Repair Business, with Findings of Fact; or
3. Revise or Modify the Planning Commission Recommendation to Resolution 2021-12, Special Use Permit for Polhemus Mechanic Shop and Automotive Repair Business, with Findings of Fact; or
4. Remand the case back to the Planning Commission.

---

**ATTACHMENTS:**

Narrative  
Location/Aerial Maps  
Memorandums

## Voth, Krystal

---

**From:** Mitch Pleak <mpleak@olsson.com>  
**Sent:** Tuesday, February 9, 2021 1:53 PM  
**To:** Clements, Jared  
**Cc:** Voth, Krystal; Noll, Bill; Anderson, Lauren; 019-2831  
**Subject:** RE: DEV-20-158 SUP Polhemus Mechanic

**Notice:** This email originated from outside this organization. Do not click on links or open attachments unless you trust the sender and know the content is safe.

Jared,  
The County has reported no weight restricted culverts long said routes. Olsson has no comments regarding the vehicle types proposed in regards to the existing gravel roadway bed or existing culverts. Public Works recommends the SUP route be limited to the northern route (Gatewood to 175<sup>th</sup> Street to K92). With the route connecting to a State route, it is typical for the County to ask the State for comments on said application. Has the State been contacted?

Thanks,

### Mitch Pleak, PE

Project Engineer / Civil

D 913.748.2503

7301 W. 133rd Street, Suite 200  
Overland Park, KS 66213  
O 913.381.1170



**Follow Us:** [Facebook](#) / [Twitter](#) / [Instagram](#) / [LinkedIn](#) / [YouTube](#)

[View Legal Disclaimer](#)

---

**From:** Clements, Jared <JClements@leavenworthcounty.gov>  
**Sent:** Monday, February 1, 2021 10:44 AM  
**To:** Mitch Pleak <mpleak@olsson.com>  
**Cc:** Voth, Krystal <KVoth@leavenworthcounty.gov>; Noll, Bill <BNoll@leavenworthcounty.gov>; Anderson, Lauren <LAnderson@leavenworthcounty.gov>  
**Subject:** RE: DEV-20-158 SUP Polhemus Mechanic

Good Morning Mitch,

After speaking with the applicant they specify that Grain Trailers weigh around 10,000 lbs, and will most commonly be brought to the property via semi-truck (16,000 – 17,000 lbs).  
Let me know if you need any more information.

Thank you,

Jared

---

**From:** Mitch Pleak <[mpleak@olsson.com](mailto:mpleak@olsson.com)>  
**Sent:** Monday, February 1, 2021 9:58 AM  
**To:** Clements, Jared <[JClements@leavenworthcounty.gov](mailto:JClements@leavenworthcounty.gov)>  
**Cc:** Voth, Krystal <[KVoth@leavenworthcounty.gov](mailto:KVoth@leavenworthcounty.gov)>; Noll, Bill <[BNoll@leavenworthcounty.gov](mailto:BNoll@leavenworthcounty.gov)>; Anderson, Lauren <[LANderson@leavenworthcounty.gov](mailto:LANderson@leavenworthcounty.gov)>; 019-2831 <[019-2831@olsson.com](mailto:019-2831@olsson.com)>  
**Subject:** FW: DEV-20-158 SUP Polhemus Mechanic

**Notice:** This email originated from outside this organization. Do not click on links or open attachments unless you trust the sender and know the content is safe.

Jared,  
Good morning. To full understand the proposed use, please have the applicant provide the average weight and size of the "grain trailers". Also, will the trailers be pulled by a semi-truck with an approximate weight between 16,000 to 17,000 lbs?

Thanks,

## Mitch Pleak, PE

Project Engineer / Civil

D 913.748.2503

7301 W. 133rd Street, Suite 200  
Overland Park, KS 66213  
O 913.381.1170



**Follow Us:** Facebook / Twitter / Instagram / LinkedIn / YouTube

[View Legal Disclaimer](#)

---

**From:** Clements, Jared <[JClements@leavenworthcounty.gov](mailto:JClements@leavenworthcounty.gov)>  
**Sent:** Friday, January 29, 2021 12:37 PM  
**To:** Mitch Pleak <[mpleak@olsson.com](mailto:mpleak@olsson.com)>  
**Cc:** Voth, Krystal <[KVoth@leavenworthcounty.gov](mailto:KVoth@leavenworthcounty.gov)>  
**Subject:** RE: DEV-20-158 SUP Polhemus Mechanic

Hi Mitch,

I spoke with Mr. Polhemus about his anticipated traffic when scheduling a site visit for this afternoon, details below. Let me know if you need anything else

- **Vehicles Per Week:** 1-2
- **Time Frame:** between 7am to 7pm
- **Anticipated Routes:**
  - o Traffic from North – K92 > 175<sup>th</sup> > Gatewood
  - o Traffic from South – Eisenhower > 179<sup>th</sup> > Michals > 175<sup>th</sup> > Gatewood

- **Types of Vehicles:** Mr. Polhemus indicates that he does not work on personal vehicles, mostly working on Semi-Trucks (he specifies he anticipates they will never be loaded). He stated they approximately weigh between 16,000 & 17,000 lbs on average. Applicant also mentioned anticipating working on “Grain Trailers”, which he states are heavier (I am unfamiliar with this vehicle type).

Thanks Mitch,  
Jared Clements

---

**From:** Mitch Pleak <[mpleak@olsson.com](mailto:mpleak@olsson.com)>

**Sent:** Monday, January 4, 2021 4:52 PM

**To:** Clements, Jared <[JClements@leavenworthcounty.gov](mailto:JClements@leavenworthcounty.gov)>

**Cc:** Anderson, Lauren <[LAnderson@leavenworthcounty.gov](mailto:LAnderson@leavenworthcounty.gov)>; Noll, Bill <[BNoll@leavenworthcounty.gov](mailto:BNoll@leavenworthcounty.gov)>; 019-2831 <[019-2831@olsson.com](mailto:019-2831@olsson.com)>

**Subject:** RE: DEV-20-158 SUP Polhemus Mechanic

**Notice:** This email originated from outside this organization. Do not click on links or open attachments unless you trust the sender and know the content is safe.

Jared,

The application has been reviewed. The applicant states the applied use will be for an occasional location to make repairs to commercial and agricultural vehicles and equipment. Please request the anticipated trips the applicant is planning for. Trips shall include anticipated vehicles per day/week/month including number of trucks, types of trucks, large equipment, trailers, and loads. Trips shall include customers, staff, deliveries, or other vehicles needed for the special uses permit. Provide time frames per day when the trips will be generated. There appears to be 3 routes to the site for operation as stated below. What will be the anticipate set route to the site for operations?

- Michals RD (west of 175<sup>th</sup> Street) to 175<sup>th</sup> Street to Gatewood Street to the Site.
- Michals RD (east of 175<sup>th</sup> Street) to 175<sup>th</sup> Street to Gatewood Street to the Site.
- K-92 to 175<sup>th</sup> Street to Gatewood Street to the Site.

Note, the requested above information will be used to determine if any further assessments or studies are needed.

Sincerely,

**Mitch Pleak, PE**

Project Engineer / Civil

D 913.748.2503

7301 W. 133rd Street, Suite 200

Overland Park, KS 66213

O 913.381.1170

**olsson**<sup>®</sup>

Follow Us: Facebook / Twitter / Instagram / LinkedIn / YouTube



**From:** Clements, Jared

**Sent:** Thursday, December 31, 2020 2:37 PM

**To:** Magaha, Chuck ; Van Parys, David ; Thorne, Eric ; Miller, Jamie ; Anderson, Lauren ; Johnson, Melissa ; Mitch Pleak ; [Amanda.holloway@freestate.coop](mailto:Amanda.holloway@freestate.coop); 'tmgoetz@stjoewireless.com' ; [firedistrict1@fd1lv.org](mailto:firedistrict1@fd1lv.org)

**Subject:** DEV-20-158 SUP Polhemus Mechanic

The Department of Planning & Zoning has received an application for a Special Use Permit regarding an Automotive Repair business.

The Planning Staff would appreciate your written input in consideration of the above request. Please review the attached information and forward any comments to us by January 7, 2021.

If you have any questions or need additional information, please contact me at (913) 684-0465 or at [JClements@LeavenworthCounty.Gov](mailto:JClements@LeavenworthCounty.Gov)

Thank you,

Jared Clements  
Planner II  
Leavenworth County Planning and Zoning  
300 Walnut St. Ste. 212  
Leavenworth, KS 66048  
(913)684-0465

**SPECIAL USE PERMIT APPLICATION**

Leavenworth County Planning Department  
300 Walnut, St., Suite 212  
County Courthouse  
Leavenworth, Kansas 66048  
913-684-0465

Office Use Only

PID: \_\_\_\_\_ Date Received: DEC 22 2020  
Township \_\_\_\_\_  
Planning Commission Date: \_\_\_\_\_  
Case No. \_\_\_\_\_ Date Paid 12/22/2020  
Zoning District \_\_\_\_\_  
Comprehensive Plan land use designation \_\_\_\_\_

**APPLICANT/AGENT INFORMATION**

NAME AIDEN POLHEMUS  
ADDRESS 17405 GATEWOOD ST  
CITY/ST/ZIP LEAVENWORTH, KS, 66048  
PHONE 913 669 3749  
EMAIL AMP MOBILE SRVC @ GMAIL.COM  
CONTACT PERSON AIDEN

**OWNER INFORMATION (If different)**

NAME \_\_\_\_\_  
ADDRESS \_\_\_\_\_  
CITY/ST/ZIP \_\_\_\_\_  
PHONE \_\_\_\_\_  
EMAIL \_\_\_\_\_  
CONTACT PERSON \_\_\_\_\_

**PROPOSED USE INFORMATION**

Existing and Proposed structures BARN - EXISTING  
Reason for requesting a Special Use Permit PERFORM SERVICE/REPAIR OF COMMERCIAL EQUIPMENT "TRUCKS" ON SITE

**PROPERTY INFORMATION**

Address of property 17405 GATEWOOD ST LV, KS Parcel size 5+ ACRES  
Current use of the property RESIDENTIAL  
Does the owner live on the property? YES  
Does the applicant own property in states or counties other than Kansas and Leavenworth County? NO

I, the undersigned am the (circle one) owner, duly authorized agent, of the aforementioned property situated in the unincorporated portion of Leavenworth County, Kansas. By execution of my signature, I do hereby officially apply for a Special Use Permit as indicated above. I hereby agree to "cease and desist" the operation of the activity upon denial of the permit by the Board of County Commissioners.

Signature [Signature] Date 12-21-2020

**ATTACHMENT A**

**Narrative:**

Proposed special use of property: 17405 Gatewood St Leavenworth, Ks 66048

Application for 10 year special use permit

Current use: Property is currently being used only to park one commercial vehicle(service truck).

Applied use: Property/ existing barn to be used as occasional location to make repairs to commercial and agricultural vehicles and equipment.

Hours of operation: Not to exceed 7am- 7pm Mon- Sat

Employees: Not to exceed owner Aiden Polhemus and spouse Marie Polhemus.

Signs: No signs are or will be located on the property, other than emergency contact information located on the building door.

Chemicals: Small quantities of cleaning solvents will be used on site, and indoors ie: parts washing solvent, but will be kept in approved containers and disposed of properly.

Fluids: Small quantities of oil's and coolants will be kept on site, in approved containers, indoors. Any used fluids will be stored in approved containers and disposed of properly. Used oils may be used in the future to produce heat with the use of a UL certified oil furnace.

Site polution: Special care will be taken to ensure that fluids or contaminants will not be leaked or spilled, but ossible polution could result from from a vehicle on site leaking fuel/oil/coolant on to the ground. Remedy: Pig Matt and drain pans will be used to contain or absorbe any fluids that may be leaking or spilled, all fluids contained will be stored in approved containers until those fluids can be properly disgarded. In the event that any fluid would soak into the ground, that soil would be removed and properly disposed of with the use of a spill kit.

Sewage: No additional sewage will be produced.

Water supply: No additional water will be used.

Noise: Some noise will be produced as can be associated with normal vehicle repairs, but that noise will made indoors, and should not be at a level audible to neighboring homes or propertys.

Odors/Fumes: No odors or fumes will be produced.

Accessory building: One existing Accessory building (barn) will be used as sole site of work to be performed on property.

Facility to be used to provide shelter for lengthy commercial and agricultural vehicle and equipment repairs year round.

Property use: Use of property will be year round but may increase during the winter months as it can be too cold to effectively perform repairs outdoors at customer locations

Proposed property use will give Amp Mobile Services the ability to provide a valuable mechanical repair service to commercial and agricultural customers in Leavenworth and neighboring counties.

Emergency: Emergency contact name and number will be located on the building door.

Storm, the House on property will be used as storm shelter in the event of a tornado.

A weather radio will be kept on site.

Evacuation: Building will be outfitted with a lighted exit sign.

Fire: Fire extinguishers will be kept on site and will be tested annually to maintain compliance.

Security lighting: There will be outdoor security lights installed on the front of the barn/shop to be used.

Parking: All company related vehicle and equipment parking will be done at the south/ west corner of the property near barn, as indicated on site plan.

Outdoor storage: Vehicles/ equipment waiting to be repaired will be stored outdoors, until time of repair. Additional fencing should not be required due to extensive number of existing trees surrounding the building and parking area.

Traffic: Traffic to enter From 92hwy via 175th St to Gatewood St, (OR) From Eisenhower Rd via 179th St to Michales Rd to 175th St to Gatewood St.

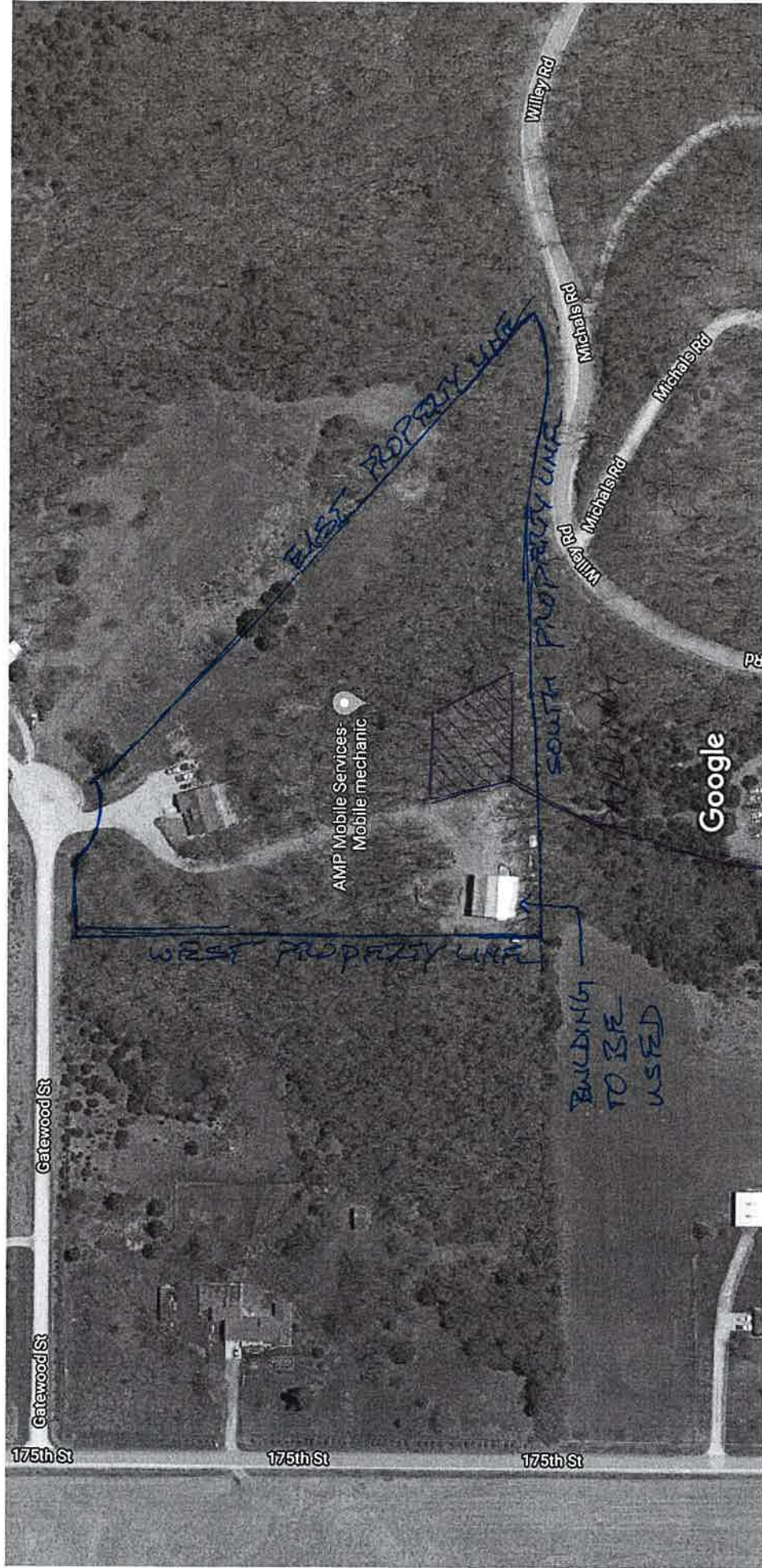
Only a small percentage of Jobs performed by Amp Mobile Service llc will be performed at this location.

Traffic Should not increase, currently company vehicle is being used to go off-site and make repairs, in some instances multiple trips may be required to make one repair, If Customer vehicles are brought to property, they will be delivered and then picked up,

eliminating the need for multiple trips from property to vehicle location for repair.

Compatibility: While this property is used primarily as residential, it is outside of city limits, and is neighboring to residential/ agricultural properties that keep commercial/ agricultural vehicles and equipment on site.

Google Maps



Imagery ©2020 Maxar Technologies, U.S. Geological Survey, USDA Farm Service Agency, Map data ©2020 100 ft



Doc #: 2015R01945  
 STACY R. DRISCOLL/REGISTER OF DEEDS  
 LEAVENWORTH COUNTY  
 RECORDED ON  
 03/26/2015 09:37AM  
 RECORDING FEE: 20.00  
 INDEBTEDNESS: 0.00  
 PAGES: 2

Entered in the transfer record in my office this  
26 day of Mar, 2015  
Jenni Klambauer  
 County Clerk

Kansas Secured Title  
 360 Santa Fe  
 Leavenworth, KS 66048

TX0008408

**GENERAL WARRANTY DEED**  
 (Statutory)

**Daniel Edgerton and Marlene Edgerton, husband and wife**

convey and warrant to

**Aiden Polhemus and Marie Polhemus, husband and wife**

as joint tenants with the right of survivorship and not as tenants in common

all the following REAL ESTATE in the County of LEAVENWORTH, and the State of Kansas, to-wit:

**Lot 7 in HIDDEN MEADOWS SUBDIVISION PHASE 1, a subdivision of land in Leavenworth County, Kansas LESS ANY PORTION OF THE FOLLOWING LYING WITHIN THE BOUNDARIES OF SAID LOT 7:**

Beginning at the Southeast corner of said Lot 8, in HIDDEN MEADOWS SUBDIVISION PHASE I; thence South 89° 22' 46" West along the South line of Lots 8 and 7 a distance of 400.00 feet; thence in a Northeasterly direction to a point on the East line of said Lot 8, said point being 50.00 feet North of the point of beginning; thence South along the East line of said Lot 8 a distance of 50.00 feet to the point of beginning,

for the sum of one dollar and other good and valuable consideration.

EXCEPT AND SUBJECT TO: Easements, restrictions and assessments of record, and all the taxes and assessments that may be levied, imposed or become payable hereafter.

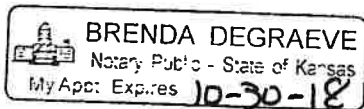
Dated this 25<sup>th</sup> day of March, 2015.

Daniel Edgerton  
Daniel Edgerton

Marlene Edgerton  
Marlene Edgerton

STATE OF KANSAS, LEAVENWORTH COUNTY:

The foregoing instrument executed was acknowledged before me this 25<sup>th</sup> day of March, 2015, by Daniel Edgerton and Marlene Edgerton, husband and wife.



Brenda Degraeve  
Notary Public

My appointment expires: \_\_\_\_\_



Tax ID 2020 1-27630

Leavenworth County Treasurer  
 Janice L. Van Parys  
 300 Walnut St Ste 105  
 Leavenworth, Ks. 66048-2725

ASSESSMENT		LEVY	116.926
CLASS	LAND IMPROVEMENT	TAX	
R	8,191 19,835	3,230.98	
Total Val 28,026		Tax 3,230.98	

M  
A  
I  
L  
T  
O

POLHEMUS, AIDEN & MARIE  
 17405 GATEWOOD ST  
 LEAVENWORTH KS 66048-7715

**PAYMENT INSTRUCTIONS**  
 TREASURER'S PHONE: 913-684-0434  
 Make checks payable to Leavenworth County Treasurer. Interest will be charged after due date, if personal tax becomes delinquent the full tax becomes due. TREASURER IS NOT RESPONSIBLE FOR OMISSIONS, PLEASE MAKE SURE THAT ALL YOUR PROPERTY IS LISTED.

**PROPERTY INFORMATION**  
 TAX UNIT 054 Twp-HIGH PRAIRIE TOWNSHIP  
 USD 469 CAMA # 103-08-0-00-00-015.06-0  
 Prop Addr: 17405 GATEWOOD ST 66048  
 Sec-08 Twp-09 Rng-22E  
 Subd-HIDDEN MEADOWS SUB PHASE I  
 Acres-6.56  
 HIDDEN MEADOWS PHASE I, S08, T09, R22E,  
 ACRES 6.56, LOT 7 LESS A PT BEG SE COR,  
 W400', NLY 350'(S), S50' TO POB

DISTRIBUTION OF TAX	TAX AMT
USD 469 - GENERAL	514.52
USD 469 - OTHER	678.88
USD 469 - BOND/INT NO.1	412.96
STATE	42.04
LEAVENWORTH COUNTY	1,035.45
HIGH PRAIRIE TWP.	22.90
N.E. KANSAS LIBRARY	37.86
FIRE DISTRICT #1	250.08
LOCAL SERVICE/COUNTY	236.29
Pay at <a href="http://www.kansastreasurers.org">www.kansastreasurers.org</a>	
<b>TOTAL TAX DUE</b>	<b>3,230.98</b>
Paid as of 12/11/2020	1,615.49
Due 05/10/2021	1,615.49

Please remit appropriate payment stub with payment

LEAVENWORTH COUNTY  
 FULL PAYMENT  
 DUE 05/10/2021  
 STATEMENT # 32999  
 Full Amt 1,615.49  
 Tax ID # 2020 1-27630  
 POLHEMUS, AIDEN & MARIE



20200003299912

NO STATEMENT FOR SECOND HALF WILL BE MAILED.

## RESOLUTION 2021-12

A resolution of the Leavenworth County Kansas Board of County Commission, issuing a Special Use Permit for an Automotive Repair Facility – Polhemus Mechanic on the following described property:

A tract of land in the Northeast Quarter of Section 8, Township 9 South, Range 22 East of the 6th P.M, in Leavenworth County, Kansas

WHEREAS, it is hereby found and determined that a request for a Special Use Permit as described above was filed with the Secretary of the Leavenworth County Planning Commission, on the 28<sup>th</sup> day of December, 2020, and

WHEREAS, it is hereby found that the Leavenworth County Planning Commission, after notice as required by law, did conduct a public hearing upon the granting of such request for a Special Use Permit on the 10<sup>th</sup> day of March, 2020; and

WHEREAS, it is hereby found that the Leavenworth County Planning Commission, based upon specific findings of fact incorporated by reference herein, did recommend that the Special Use Permit be approved, subject to special conditions as set forth; and

WHEREAS, the Board of County Commission considered, in session on the 5<sup>th</sup> day of May, 2021, the recommendation of the Leavenworth County Planning Commission.

NOW, THEREFORE, BE IT RESOLVED by the Board of County Commission of Leavenworth County, Kansas, that:

1. Based upon the recommendation and findings of fact of the Leavenworth County Planning Commission; and,
2. Based upon the findings of fact adopted by the Board of County Commission in regular session on the 5<sup>th</sup> day of May, 2020, and incorporated herein by reference;

That Case No. DEV-20-158, Special Use Permit an Automotive Repair Facility – Polhemus Mechanic approved subject to the following conditions:

1. The SUP shall be limited to a period of five (5) years.
2. The business shall be limited to the hours of 7:00 AM until 7:00 PM Monday-Saturday.
3. The SUP shall be limited to two full-time employees and one part-time employee.
4. The applicant shall update the site plan to indicate a designated parking area. The parking area shall be sized for not more than five (5) vehicles. All vehicles shall be either contained within the shop or on the designated parking area.
5. There shall be no storage of parts or junk vehicles outside.
6. There shall be no more than six (6) vehicles stored at the site overnight.
7. The building shall be completed, including the flood, prior to business operations.
8. Noise levels at the property line shall not exceed 60 dbls.

9. There shall be no unregistered vehicles at the property.
10. All floor drains connected to the septic system shall be capped or plugged. Other drains shall collect all automotive fluids for proper disposal.
11. There shall be no on-site retail sales.
12. No signage is allowed in the right-of-way. No signage is requested with the SUP. All signage shall comply with Article 25, Sign Regulations of the Leavenworth County Zoning and Subdivision Regulations.
13. No on-street parking shall be allowed.
14. This SUP shall be limited to the Narrative dated December 22, 2020 submitted with this application.
15. This SUP shall comply with all local, state, and federal rules and regulations that may be applicable. After approval of this SUP by the Board of County Commission all conditions listed shall be adhered to and copies shall be provided to the Planning and Zoning Department within 30 days.

located in Section 8, Township 9 South, Range 22, also known as 17405 Gatewood Street, parcel no. 103-08-0-00-00-015.06 in Leavenworth County, Kansas.

Adopted this 5th day of May, 2020  
Board of County Commission  
Leavenworth, County, Kansas

---

Mike Smith, Chairman

ATTEST

---

Jeff Culbertson, Member

---

Janet Klasinski

---

Vicky Kaaz, Member

---

Doug Smith, Member

---

Mike Stieben, Member

**Leavenworth County  
Request for Board Action  
Resolution 2021-13  
Special Use Permit for Mortsof Laydown Yard**

**Date:** May 5th, 2021  
**To:** Board of County Commissioners  
**From:** Planning & Zoning Staff

**Department Head Review:** Krystal Voth, Reviewed

**Additional Reviews as needed:**

**Budget Review**  **Administrator Review**  **Legal Review**

---

---

**Action Requested:** Approve Resolution 2021-13 a Special Use Permit for Mortsof Laydown Yard & Repair Facility.

**Analysis:** The applicant is requesting a Special Use Permit for the operation of a Laydown Yard, Auto Repair facility, and boat storage facility.

The applicant is currently operating a construction business based from this property. He is the only employee of his business, while he hopes to hire another employee at a future date. The applicant uses the property mainly to store excess materials from jobsites that the applicant can use at a later date on other jobsites. The applicant utilizes an existing shop/lean-to structure with a total footprint of 50' x 70' for a limited amount of business material storage area and utilizes open space on his property for the majority of the excess construction materials. The applicant performs repairs to boats and vehicles in his shop. Most vehicles waiting to be repaired are stored behind the fence line to the Northeast of the shop. The applicant stores excess materials in the shop, the lean-to, and outside to the south and southeast of the shop.

The applicant also stores and repairs boats on his property. He estimates there has been an average of 12-16 boats in storage on the property, including his own boats. Currently, there are 9 boats in storage or waiting for repair on the property. The applicant stores these boats north of the tree line to the east of his shop.

Lastly, the applicant works on a part-time basis as a mechanic for friends and family. He utilizes the shop to repair the vehicles when he has the time to do so. Customers will leave the vehicles for extended periods on his property until the applicant completes the repairs. The applicant stated that it is customary for vehicles to wait 3 or more weeks for repairs. Currently, he has 4 customer vehicles on the property waiting repairs. In total, the businesses create no more than one additional visit (two one-way trips) per week as the applicant has very few vehicle repair customers.

**Recommendation:** The Planning Commission voted 5-3 to recommend approval of Case No. DEV-21-029 (Resolution 2021-13) Special Use Permit for a Mortsof Laydown Yard.

**Alternatives:**

1. Approve Case No. DEV-21-029 (Resolution 2021-13) Special Use Permit for Mortsof Laydown Yard, with Findings of Fact, and with or without conditions; or
2. Deny Case No. DEV-21-029 (Resolution 2021-13) Special Use Permit for Mortsof Laydown Yard, with Findings of Fact; or
3. Revise or Modify the Planning Commission Recommendation to Case No DEV-21-029 (Resolution 2021-13) Special Use Permit for Mortsof Laydown Yard, with Findings of Fact; or
4. Remand the case back to the Planning Commission.

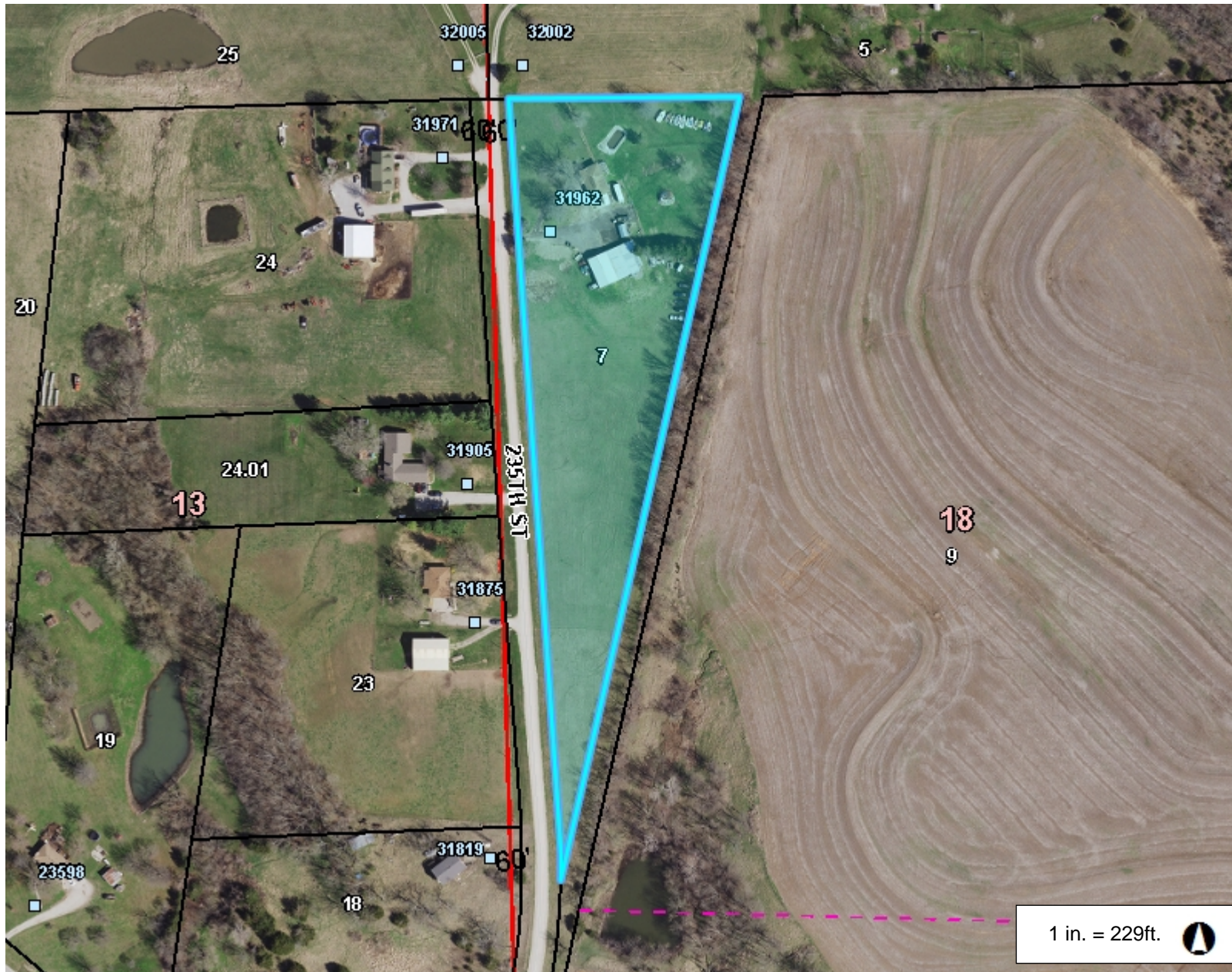
**Budgetary Impact:**

- Not Applicable
- Budgeted item with available funds
- Non-Budgeted item with available funds through prioritization
- Non-Budgeted item with additional funds requested

**Total Amount Requested:** \$0.00

**Additional Attachments:** Staff Report, Narrative, Planning Commission Minutes

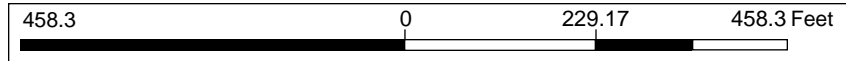
# DEV-21-029 Mortsolf SUP



### Legend

- Address Point
- Parcel Number
- Lot Line
- Parcel
- ⊞ City Limit Line
- Major Road
- <all other values>
- 70
- Road
- + Railroad
- Section
- Section Boundaries
- County Boundary

1 in. = 229ft.



This Cadastral Map is for informational purposes only. It does not purport to represent a property boundary survey of the parcels shown and shall not be used for conveyances or the establishment of property boundaries.  
THIS MAP IS NOT TO BE USED FOR NAVIGATION

### Notes

**Resolution 2021-13**  
**Mortsof Laydown Yard**  
Special Use Permit – Laydown Yard & Repair Facility

**Staff Report – Board of County Commissioners**

**May 5, 2021**

**GENERAL INFORMATION:**

**Applicant/Property Owner:** Scott Mortsof  
31962 235<sup>th</sup> Street  
Easton, KS 66020

**Legal Description:** A tract of land in the Southeast Quarter of Section 18, Township 08 South, Range 21 East of the 6<sup>th</sup> P.M, in Leavenworth County, Kansas.

**Location:** 31962 235<sup>th</sup> Street, Easton, KS 66020

**Parcel Size:** ± 5 acres

**Zoning/Land Use:** RR-2.5, Rural Residential 2.5-acre minimum size parcels

**Comprehensive Plan:** This parcel is within the Residential land use category.

**Parcel ID No.:** 064-18-0-00-00-007.00

**Planner:** Joshua Gentzler

---

**PLANNING COMMISSION RECOMMENDATION:**

The Planning Commission voted to recommend approval of Resolution 2021-13 (Case No. DEV-21-029), Special Use Permit for Mortsof Laydown Yard, by a 5-3 margin, with the following conditions:

1. The SUP shall be limited to a period of five (5) years.
2. The applicant shall keep all boats and vehicles stored on-site for any length of time to be placed behind the existing fence line and tree line northeast of the shop.
3. The applicant shall store all excess construction materials inside existing structure.
4. The business shall be limited to the hours of 6:30 am to 6:00 pm, Monday through Friday.
5. The SUP shall be limited to two (2) employees.
6. The applicant shall not store parts or junk vehicles outside.
7. The applicant shall not store unregistered vehicles on-site.
8. The SUP shall be limited to 15 total vehicles, boat and automotive combined, at any time on the property.
9. The applicant shall adhere to the following memorandums:
  - a. Chuck Magaha – Emergency Management, April 5, 2021
10. No signage is allowed in the right-of-way. No signage is requested with the SUP. All signage shall comply with Article 25, Sign Regulations of the Leavenworth County Zoning and Subdivision Regulations.
11. No on-street parking shall be allowed.
12. This SUP shall be limited to the Narrative dated February 26, 2021 submitted with this application.

13. This SUP shall comply with all local, state, and federal rules and regulations that may be applicable. After approval of this SUP by the Board of County Commission all conditions listed shall be adhered to and copies shall be provided to the Planning and Zoning Department within 30 days.
14. The applicant shall install an 8-foot wooden fence and maintain the fence in good working condition.
15. The applicant shall not keep piles of junk parts, metal, or construction remnants on this property.
16. The applicant shall not burn junk on this property.

---

**REPORT:****Request**

The applicant is requesting a Special Use Permit for a Laydown Yard & Repair Service Facility.

**Adjacent Land Use**

The surrounding properties are residences and farms on varying sized parcels ranging from 3 acres to over 70 acres in size.

**Flood Plain**

There are no Special Flood Hazard Areas on this parcel per FEMA Firm Map 20103C0200G July 16, 2015.

**Utilities/Services**

Sewer: Private septic system  
Fire: Easton  
Water: Rural Water District 12  
Electric: Evergy

**Access/Streets**

The property is accessed by 235<sup>th</sup> Street, a Local County Road with a gravel surface ± 22' wide.

**Agency Comments**

See attached comments – Email – Kyle Anderson – Planning and Zoning, March 3<sup>rd</sup>, 2021  
See attached comments – Email – Lauren Anderson – Public Works, March 3<sup>rd</sup>, 2021  
See attached comments – Email – Chuck Magaha – Emergency Management, April 5, 2021  
See attached comments – Email – David Van Parys – County Counselor, March 3<sup>rd</sup>, 2021

**Factors to be considered**

The following factors are to be considered by the Planning Commission and the Board of County Commission when approving or disapproving this Special Use Permit request:

1. Character of the neighborhood: The character of the neighborhood is rural; primarily rural residences, and agricultural uses.
2. Zoning and uses of nearby property: The surrounding properties are zoned RR-2.5, Rural Residential 2.5-acre minimum size parcels. The uses are rural residences and agricultural.
3. Suitability of the property for the uses to which it has been restricted: The property is within an area suited for rural residences and agricultural use. The use is allowed with approval of a Special Use Permit
4. Extent to which removal of the restrictions will detrimentally affect nearby property: The area will not likely be detrimentally affected by the storage of materials or repairs of vehicles. There is not significant noise associated with the business operations. There are very few visitors and little come-and-go traffic to the site.
5. Length of time the property has been vacant as zoned: The property is not vacant.
6. Relative gain to economic development, public health, safety and welfare: The proposed use will provide income for the applicant.
7. Conformance to the Comprehensive Plan: The Future Land Use Map indicates this area as low-density residential.
8. Staff recommendation is for the approval of Special Use Permit with conditions.



<b>LOCATION</b>	
<b>Adjacent Residences</b>	Adjacent residences are rural-suburban uses. Most properties to the north and east are on 30-acre parcels, or larger. Parcels to the south and west range from 3-acre parcels to over 20 acres in size.
<b>Adjacent Zoning/Uses</b>	Zoning in the area is RR-5 and are used primarily as rural residences and agricultural uses.
<b>Density</b>	The area is not densely populated.
<b>Nearby City Limits</b>	The city of Easton is approximately 1/10 <sup>th</sup> of a mile to the south of the property.
<b>Initial Growth Management Area</b>	The property is located within the City of Easton's Urban Growth Management Area.

<b>IMPACT</b>	
<b>Noise Pollution</b>	This use will not cause prolonged noise pollution. The primary times of elevated noise levels will vary, based on the applicant's schedule.
<b>Traffic</b>	The use will create a slight increase in traffic in the morning and evening, depending on the schedule of the applicant.
<b>Lighting</b>	The applicant does not have lighting other than security lighting and is not requesting lighting.
<b>Outdoor Storage</b>	The applicant stores a number of boats and vehicles outside near an existing shop.
<b>Parking</b>	The applicant has ample parking space as he has no employees.
<b>Visitors/Employees</b>	Typically, there is one customer who brings a vehicle to the site a week.
<b>Waste</b>	The business generates contracting waste and other waste consistent with vehicle repair. This waste is properly disposed of according to KDHE standards.

<b>SITE COMPATABILITY</b>	
<b>Size of Parcel</b>	The parcel is five (5) acres in size.
<b>Zoning of Parcel</b>	The parcel is zoned Rural Residential-2.5
<b>Buildings (Existing &amp; Proposed)</b>	The applicant has a shop on the property that is approximately 32 x 48. A lean-to has been constructed to attach to the shop. Tools and equipment for the business are stored in the shop and in the lean-to.
<b>Setbacks</b>	Existing building meet the required setbacks.
<b>Screening</b>	The applicant is using existing landscaping to screen a portion of the storage yard on the northeast corner of the property. Additionally, the applicant is using a fenced area to screen additional storage.

### **History**

This is the applicant's first request for a Special Use Permit.

### **Staff Comments**

The applicant is requesting a Special Use Permit for the operation of a Laydown Yard, Auto Repair facility, and boat storage facility.

The applicant is currently operating a construction business based from this property. He is the only employee of his business, while he hopes to hire another employee at a future date. The applicant uses the property mainly to store excess materials from jobsites that the applicant can use at a later date on other jobsites. The applicant utilizes an existing shop/lean-to structure with a total footprint of 50' x 70' for a limited amount of business material storage area and utilizes open space on his property for the majority of the excess construction materials. The applicant performs repairs to boats and vehicles in his shop. Most vehicles waiting to be repaired are stored behind the fence line to the Northeast of the shop. The applicant stores excess materials in the shop, the lean-to, and outside to the south and southeast of the shop.

The applicant also stores and repairs boats on his property. He estimates there has been an average of 12-16 boats in storage on the property, including his own boats. Currently, there are 9 boats in storage or waiting for repair on the property. The applicant stores these boats north of the tree line to the east of his shop.

Lastly, the applicant works on a part-time basis as a mechanic for friends and family. He utilizes the shop to repair the vehicles when he has the time to do so. Customers will leave the vehicles for extended periods on his property until the applicant completes the repairs. The applicant stated that it is customary for vehicles to wait 3 or more weeks for repairs. Currently, he has 4 customer vehicles on the property waiting repairs. In total, the businesses create no more than one additional visit (two one-way trips) per week as the applicant has very few vehicle repair customers.

---

**ACTION OPTIONS:**

1. Approve Case No. DEV-21-029 (Resolution 2021-13) Special Use Permit for Mortsof Laydown Yard, with Findings of Fact, and with or without conditions; or
2. Deny Case No. DEV-21-029 (Resolution 2021-13) Special Use Permit for Mortsof Laydown Yard, with Findings of Fact; or
3. Revise or Modify the Planning Commission Recommendation to Case No DEV-21-029 (Resolution 2021-13) Special Use Permit for Mortsof Laydown Yard, with Findings of Fact; or
4. Remand the case back to the Planning Commission.

---

**ATTACHMENTS:**

Narrative  
Location/Aerial Maps  
Memorandums

The current use of the proposed area is storage of boats and vehicles for repairs, storage of equipment, trailers and building materials for my remodeling and construction businesses.

The proposed use of the area is the same, storage of boats and vehicles for repairs, storage of equipment, trailers and building materials for my remodeling and construction business.

Hours of operation are 8:00 AM to 5:00 PM. Monday thru Friday. Except for New Years, Memorial Day, Independence Day, Labor Day, Thanksgiving, and Christmas Day will be closed.

Employees consist of me, my wife and hopefully one more in the future.

I do not plan on any signage installed on property. The only advertisement will be on my tool trailer or on my vehicle(s).

Gasoline, diesel and motor oil are the fluids being used. The diesel and gasoline is stored in a fuel cell and/or plastic fuel jugs. The oil is in plastic jugs and plastic drum. The used oil is disposed at a mechanic shop in the city.

The proposal will not add or use any more sewage or water than what we use now living on the property.

The proposal should not cause any more noise, sounds, odors, ~~or~~ fumes or dust than all the farming that is all around the area that I am asking for the permit.

The only advertising that will be on the proposed area will be what is on my tool trailer and vehicle(s).

MAINTENANCE, EQUIPMENT, PARKING AND STORAGE IS SHOWN ON THE ATTACH SHEET THAT I HAVE PROVIDED.

THERE IS NO ALCOHOL SERVICE IN PROPOSED AREA,

THERE SHOULD NOT BE NO USED FOR DUST CONTROL IN PROPOSED AREA.

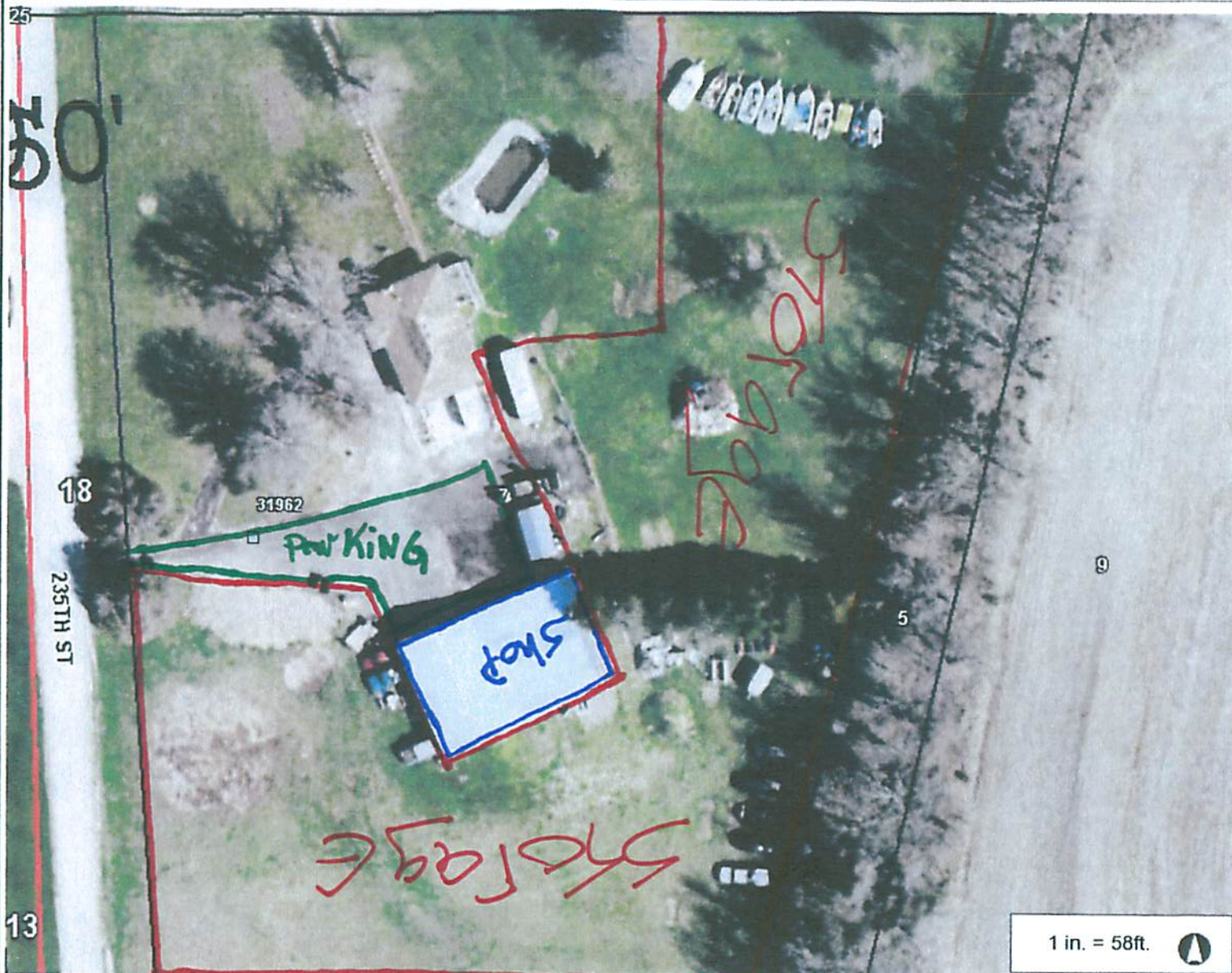
EMERGENCY CONTACTS ARE 913-706-5701 SLOTT MORISOLF, 913-683-9339 STEPHANIE MORISOLF. THE BASEMENT OF ARE HOUSE IS ARE SHELTER AREA. OUR CELL PHONES IS WHAT WE USE FOR ARE WEATHER RADIO. THE EVACUATION PLAN ARE TO GET OUT OF ANY OF THE FOUR DOORS IN THE BARN THAT HAS A FIRE EXTINGUISHER NEARBY THEM.

PART OF STORAGE AREA IS ALREADY FENCED IN AND PART OF IT IS NOT FENCED.

I HAVE SECURITY LIGHTS ON FRONT OF BARN, FRONT AND SIDE OF HOUSE, PLUS A STREET LIGHT ON EAST SIDE BETWEEN HOUSE AND BARN.

THE TRAFFIC WILL STAY CLOSE TO THE SAME AS IT IS FROM ALL THE DAYS TO DAY TRAFFIC NOW. IT WILL BE ME AND MY WIFE TRAVELING UP AND DOWN THE ROAD UNTILL I FIND ANOTHER EMPLOYEE. SO THERE WILL BE ONE TO THREE EMPLOYEES TRAVELING ROADWAY. THERE WILL BE VERY LITTLE DELIVERIES TRAFFIC TO SHOP CAUSE I EITHER PICK STUFF UP MY SELF OR HAVE STUFF DELIVERED STRAIGHT TO OTHER JOB SITES.

# Leavenworth County, KS



## Legend

- Address Point
- Parcel Number
- Lot Line
- Parcel
- City Limit Line
- Major Road
  - <all other values>
  - 70
- Road
- + Railroad
- Section
- Section Boundaries
- County Boundary

1 in. = 58ft.



116.9 0 58.43 116.9 Feet

This Cadastral Map is for informational purposes only. It does not purport to represent a property boundary survey of the parcels shown and shall not be used for conveyances or the establishment of property boundaries.

THIS MAP IS NOT TO BE USED FOR NAVIGATION

## Notes



Leavenworth County  
Planning & Zoning Department  
300 Walnut, Suite 212  
Leavenworth, Kansas 66048

---

**To:** Krystal Voth  
Director

**From:** Kyle Anderson  
Environmental Tech/Code Enforcement

**Date:** March 3, 2021

**RE:** Scott Mortsolf  
**Case DEV-21-029, Special Use Permit**  
31962 235<sup>th</sup> St  
Easton, KS 66020  
PID# 064-18-0-00-00-007.00

Our department received a Special Use Permit application for a Contractor Laydown Yard located at the above listed location. We have received one complaint for the storage of junk, debris, and boats on the property. It was this complaint that led us to finding the business being run on the property. A new policy is in effect resulting in a violation being sent to codes court after 30 days. When a citation was sent to Mr. Mortsolf he quickly contacted us to bring his parcel into compliance. The property is much more organized than it was at the time of my initial site check. The codes court case has been extended until May 26, 2005 to allow the SUP case to be properly reviewed and voted on. It has been determined if the SUP is issued, Senior County Counselor, David Van Parys will ask for the dismissal of the court case.

Thank you,

Kyle Anderson  
[kanderson@leavenworthcounty.gov](mailto:kanderson@leavenworthcounty.gov)

**From:** [Van Parys, David](#)  
**Sent:** Tuesday, March 2, 2021 8:09 AM  
**To:** [Gentzler, Joshua](#)  
**Subject:** RE: DEV-21-029 Special Use Permit - Storage & Contractor Yard

---

Josh, Appears to be of minimal impact.

---

**From:** Gentzler, Joshua  
**Sent:** Monday, March 1, 2021 5:43 PM  
**To:** RWD 12 (water12@embarqmail.com) ; James Herken (james.herken@yahoo.com) ; Tyler Rebel (Tyler.Rebel@westarenergy.com) ; Anderson, Kyle ; Anderson, Lauren ; Magaha, Chuck ; Miller, Jamie ; Mitch Pleak ; Thorne, Eric ; Van Parys, David  
**Subject:** DEV-21-029 Special Use Permit - Storage & Contractor Yard

The Department of Planning and Zoning has received an application for a Special Use Permit for a Storage Facility & Contractor Laydown Yard & Repair, located at 31962 235<sup>th</sup> Street, Easton, KS 66020.

The Planning Staff would appreciate your written input in consideration of the above request. Please review the attached information and forward any comments to us by Tuesday, March 9<sup>th</sup>.

If you have any questions or need additional information, please contact me at (913) 684-0464 or at [jgentzler@LeavenworthCounty.Gov](mailto:jgentzler@leavenworthcounty.gov).

Thank you,

**Joshua Gentzler**  
Planner II  
[Planning & Zoning](#)  
Leavenworth County  
913.684.0464

**From:** [Anderson, Lauren](#)  
**Sent:** Thursday, March 4, 2021 11:55 AM  
**To:** [Gentzler, Joshua](#); [Mitch Pleak](#); [Noll, Bill](#)  
**Subject:** RE: DEV-21-029 Special Use Permit - Storage & Contractor Yard

---

Josh,

I have pulled traffic incident reports and there appears to be no records of incidents directly related to this SUP.

There are no known structures with weight limits from K-192 to this residence.

As the only employees currently are the owners of the property and they only hope to grow by a single employee, this would not drastically increase any traffic and Public Works does not have any comment for the SUP.

Lauren

---

**From:** Gentzler, Joshua  
**Sent:** Monday, March 1, 2021 5:43 PM  
**To:** RWD 12 (water12@embarqmail.com) ; James Herken (james.herken@yahoo.com) ; Tyler Rebel (Tyler.Rebel@westarenergy.com) ; Anderson, Kyle ; Anderson, Lauren ; Magaha, Chuck ; Miller, Jamie ; Mitch Pleak ; Thorne, Eric ; Van Parys, David  
**Subject:** DEV-21-029 Special Use Permit - Storage & Contractor Yard

The Department of Planning and Zoning has received an application for a Special Use Permit for a Storage Facility & Contractor Laydown Yard & Repair, located at 31962 235<sup>th</sup> Street, Easton, KS 66020.

The Planning Staff would appreciate your written input in consideration of the above request. Please review the attached information and forward any comments to us by Tuesday, March 9<sup>th</sup>.

If you have any questions or need additional information, please contact me at (913) 684-0464 or at [jgentzler@LeavenworthCounty.Gov](mailto:jgentzler@LeavenworthCounty.Gov).

Thank you,

**Joshua Gentzler**  
Planner II  
[Planning & Zoning](#)  
Leavenworth County  
913.684.0464



# MEMO

**To:** Krystal Voth  
**From:** Chuck Magaha  
**Subject:** Mortsoft repair and Storage  
**Date:** April 8, 2021

Krystal, I have reviewed the special use permit for the operation of a automotive repair and storage shop, by Scott Mortsoft. I would ask that maybe a sign within in the shop be posted stating emergency procedures in the event of severe weather, fire or medical emergency events and a sign posted on the outside of the building with 24-hour emergency contacts. I would also like to see a plan of proper disposal of used oils, fuels, tires and used goods be addressed for this site. I would still ask that a All Hazard weather alert radio be placed within the facility to alert of hazards approaching for staff and customers. A severe weather plan should be developed of where would the staff and customers go for safety. No outdoor burning should be allowed for commercial generated waste. A tour of the facility for the local fire department for pre-planning should be accommodated in the event of incident at this location. I have no further comments at this time. If you have any questions please call me at 684-0455.

## RESOLUTION 2021-13

A resolution of the Leavenworth County Kansas Board of County Commission, issuing a Special Use Permit for a Laydown Yard – Mortsolf Laydown Yard on the following described property:

A tract of land in the Southeast Quarter of Section 18, Township 08 South, Range 21 East of the 6th P.M, in Leavenworth County, Kansas, more commonly known as 31962 235<sup>th</sup> Street.

WHEREAS, it is hereby found and determined that a request for a Special Use Permit as described above was filed with the Secretary of the Leavenworth County Planning Commission, on the 26<sup>th</sup> day of February, 2021, and

WHEREAS, it is hereby found that the Leavenworth County Planning Commission, after notice as required by law, did conduct a public hearing upon the granting of such request for a Special Use Permit on the 14<sup>th</sup> day of April, 2021; and

WHEREAS, it is hereby found that the Leavenworth County Planning Commission, based upon specific findings of fact incorporated by reference herein, did recommend that the Special Use Permit be approved, subject to special conditions as set forth; and

WHEREAS, the Board of County Commission considered, in session on the 14<sup>th</sup> day of April, 2021, the recommendation of the Leavenworth County Planning Commission.

NOW, THEREFORE, BE IT RESOLVED by the Board of County Commission of Leavenworth County, Kansas, that:

1. Based upon the recommendation and findings of fact of the Leavenworth County Planning Commission; and,
2. Based upon the findings of fact adopted by the Board of County Commission in regular session on the 14<sup>th</sup> day of April, 2021, and incorporated herein by reference;

That Case No. DEV-21-029, Special Use Permit for a Laydown Yard approved subject to the following conditions:

1. The SUP shall be limited to a period of five (5) years.
2. The applicant shall keep all boats and vehicles stored on-site for any length of time to be placed behind the existing fence line and tree line northeast of the shop.
3. The applicant shall store all excess construction materials inside existing structure.
4. The business shall be limited to the hours of 6:30 am to 6:00 pm, Monday through Friday.
5. The SUP shall be limited to two (2) employees.
6. The applicant shall not store parts or junk vehicles outside.
7. The applicant shall not store unregistered vehicles on-site.
8. The SUP shall be limited to 15 total vehicles, boat and automotive combined, at any time on the property.
9. The applicant shall adhere to the following memorandums:
  - a. Chuck Magaha – Emergency Management, April 5, 2021
10. No signage is allowed in the right-of-way. No signage is requested with the SUP. All signage shall comply with Article 25, Sign Regulations of the Leavenworth County Zoning and

Subdivision Regulations.

11. No on-street parking shall be allowed.
12. This SUP shall be limited to the Narrative dated February 26, 2021 submitted with this application.
13. This SUP shall comply with all local, state, and federal rules and regulations that may be applicable. After approval of this SUP by the Board of County Commission all conditions listed shall be adhered to and copies shall be provided to the Planning and Zoning Department within 30 days.
14. The applicant shall install an 8-foot wooden fence and maintain the fence in good working condition.
15. The applicant shall not keep piles of junk parts, metal, or construction remnants on this property.
16. The applicant shall not burn junk on this property.

Located in Section 18, Township 08 South, Range 21, also known as 31962 235<sup>th</sup> Street, parcel no. 064-18-0-00-00-007.00 in Leavenworth County, Kansas.

Adopted this 5<sup>th</sup> day of May, 2021  
Board of County Commission  
Leavenworth, County, Kansas

\_\_\_\_\_  
Michael Smith, Chairman

ATTEST

\_\_\_\_\_  
Jeff Culbertson, Member

\_\_\_\_\_  
Janet Klasinski

\_\_\_\_\_  
Vicky Kaaz, Member

\_\_\_\_\_  
Doug Smith, Member

\_\_\_\_\_  
Mike Stieben, Member



**City of Lansing**  
800 First Terrace  
Lansing, Kansas 66043

April 28, 2021

Leavenworth County Board of County Commissioners  
300 Walnut Street  
Leavenworth, KS 66048

County Commissioners:

As you may know, a recent request to assist with a sewer study along the K7 corridor was denied by the Port Authority by a 4-2 vote. The request would have provided \$240,538 to design a future sewer line along the K7 corridor to the McIntyre intersection. Portions of the K7 corridor have over 30,000 vehicles per day, and K7 will only get busier as Leavenworth County continues to grow. By designing this project, we are making this sewer line and properties in the area shovel ready for future development. There seemed to be discussion at the LCPA emphasizing industrial projects and areas with industrial parks. Lansing does not have a publicly owned industrial park, so we often get questions from citizens and elected officials about what type of return-on-investment Lansing citizens receive. While I understand the importance and emphasis of industrial projects, if that is the LCPA and LCDC's principal objective, what is Lansing receiving in return for \$18,000. In addition to continuing to market industrial properties, I believe it would be prudent to evaluate ideas to assist communities in Leavenworth County that do not have industrial parks.

At the May 5<sup>th</sup> Meeting, I would like to talk about the City of Lansing's vision for properties along the K7 corridor and how a sewer line opens possibilities in that area for future industrial, commercial, and residential development.

Sincerely,

A handwritten signature in blue ink, appearing to read "Tim Vandall".

Tim Vandall  
City Administrator  
City of Lansing